



CARBIDE TIP BROACH CUTTER

For optimum performance from Unibor machines:

Gives you:

- Longer tool life
- Energy savings
- Faster feed
- Best value
- Lowest Cost per Cut

The proven value and success of broaching cutters is based upon the lower energy required to cut more accurate holes with longer tool life. The unique geometry of Unibor cutters gives fast feed, lower cutting resistance, greater accuracy, better finish and required less drill power. Unibor standard cutters are carefully made in M2 high speed in our workshops on the state of the art CNC machines for consistent quality and accuracy, while the Tungsten Carbide range is manufactured from EN24 hardened steel to our unique design which provide full tooth support to the fine grain carbide inserts and offers generous side clearance.

Pilot Pin
(For Carbide Cutter)

Stock Code	Depth Length	Outer Dia.	Stock Code	Depth Length	Outer Dia.
AC01209	35mm	12-17mm	AC01059	75mm	18-60mm
AC00149	35mm	18-60mm	AC01191	75mm	61-100mm
AC01211	50mm	12-17mm	AC01208	100mm	18-60mm
AC01058	50mm	18-60mm	AC01344	100mm	61-100mm
AC01289	50mm	61-90mm			



AC10063
CARBIDE TIP BROACH CUTTER
18MM DIA X 35MM

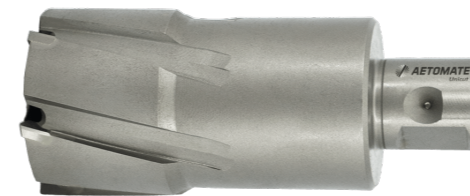
UNICUT CARBIDE TIP BROACH CUTTER

(35mm Short Series, Overall Length: 74mm)



CARBIDE TIP BROACH CUTTER
35MM DIA X 35MM

Stock Code	Dia.	Stock Code	Dia.	Stock Code	Dia.	Stock Code	Dia.
AC01205	12mm	AC00116	21mm	AC00126	31mm	AC10069	41mm
AC01206	13mm	AC00117	22mm	AC00127	32mm	AC10070	42mm
AC10059	14mm	AC00118	23mm	AC00128	33mm	AC10071	43mm
AC01207	15mm	AC00119	24mm	AC00129	34mm	AC10072	44mm
AC10060	16mm	AC00120	25mm	AC00130	35mm	AC10073	45mm
AC10061	17mm	AC00121	26mm	AC10064	36mm	AC10074	46mm
AC10062	17.5mm	AC00122	27mm	AC10065	37mm	AC10075	47mm
AC10063	18mm	AC00123	28mm	AC10066	38mm	AC10076	48mm
AC00114	19mm	AC00124	29mm	AC10067	39mm	AC10077	49mm
AC00115	20mm	AC00125	30mm	AC10068	40mm	AC10078	50mm



CARBIDE TIP BROACH CUTTER
40MM DIA X 50MM



CARBIDE TIP BROACH CUTTER
14MM DIA X 50MM

UNICUT CARBIDE TIP BROACH CUTTER

(50mm Short Series, Overall Length: 92mm)

Stock Code	Dia.	Stock Code	Dia.	Stock Code	Dia.	Stock Code	Dia.
AC01571	12mm	AC10091	27mm	AC00139	43mm	AC10104	70mm
AC01537	13mm	AC10092	28mm	AC00140	44mm	AC01702	71mm
AC01210	14mm	AC10093	29mm	AC00141	45mm	AC01703	72mm
AC10105	15mm	AC10094	30mm	AC00142	46mm	AC01704	73mm
AC10079	16mm	AC10095	31mm	AC00143	47mm	AC01706	75mm
AC10080	17mm	AC10096	32mm	AC00144	48mm	AC01707	76mm
AC10081	17.5mm	AC10097	33mm	AC00145	49mm	AC01708	77mm
AC10082	18mm	AC10098	34mm	AC00146	50mm	AC01709	78mm
AC10083	19mm	AC10099	35mm	AE01705	51mm	AC01710	79mm
AC10084	20mm	AC00132	36mm	AC01070	52mm	AC01711	80mm
AC10085	21mm	AC00133	37mm	AC01071	55mm	AC01711	81mm
AC10086	22mm	AC00134	38mm	AC01072	60mm	AC01712	85mm
AC10087	23mm	AC00135	39mm	AC01073	65mm	AC01713	90mm
AC10088	24mm	AC00136	40mm	AC01074	68mm		
AC10089	25mm	AC00137	41mm	AC01714	67mm		
AC10090	26mm	AC00138	42mm	AC01700	69mm		



CARBIDE TIP BROACH CUTTER
30MM DIA X 75MM



CARBIDE TIP BROACH CUTTER
44MM DIA X 75MM

UNICUT CARBIDE TIP BROACH CUTTER

(75mm Short Series, Overall Length: 112mm)

Stock Code	Dia.	Stock Code	Dia.	Stock Code	Dia.	Stock Code	Dia.
AC01236	18mm	AC01250	32mm	AC01264	46mm	AC01278	60mm
AC01237	19mm	AC01251	33mm	AC01265	47mm	AC01279	61mm
AC01238	20mm	AC01252	34mm	AC01266	48mm	AC01280	62mm
AC01239	21mm	AC01253	35mm	AC01267	49mm	AC01281	63mm
AC01240	22mm	AC01254	36mm	AC01268	50mm	AC01282	64mm
AC01241	23mm	AC01255	37mm	AC01269	51mm	AC01283	65mm
AC01242	24mm	AC01256	38mm	AC01270	52mm	AC01284	66mm
AC01243	25mm	AC01257	39mm	AC01271	53mm	AC01285	67mm
AC01244	26mm	AC01258	40mm	AC01272	54mm	AC01286	68mm
AC01245	27mm	AC01259	41mm	AC01273	55mm	AC01287	69mm
AC01246	28mm	AC01260	42mm	AC01274	56mm	AC01288	70mm
AC01247	29mm	AC01261	43mm	AC01275	57mm	AC01542	80mm
AC01248	30mm	AC01262	44mm	AC01276	58mm		
AC01249	31mm	AC01263	45mm	AC01277	59mm		



CARBIDE TIP BROACH CUTTER
53MM DIA X 110MM



CARBIDE TIP BROACH CUTTER
75MM DIA X 110MM

UNICUT CARBIDE TIP BROACH CUTTER

(110mm Short Series, Overall Length: 143mm)

Stock Code	Dia.	Stock Code	Dia.	Stock Code	Dia.	Stock Code	Dia.
AC01290	22mm	AC01305	37mm	AC01320	52mm	AC01335	67mm
AC01291	23mm	AC01306	38mm	AC01321	53mm	AC01336	68mm
AC01292	24mm	AC01307	39mm	AC01322	54mm	AC01337	69mm
AC01293	25mm	AC01308	40mm	AC01323	55mm	AC01338	70mm
AC01294	26mm	AC01309	41mm	AC01324	56mm	AC01339	71mm
AC01295	27mm	AC01310	42mm	AC01325	57mm	AC01340	72mm
AC01296	28mm	AC01311	43mm	AC01326	58mm	AC01341	73mm
AC01297	29mm	AC01312	44mm	AC01327	59mm	AC01342	74mm
AC01298	30mm	AC01313	45mm	AC01328	60mm	AC01343	75mm
AC01299	31mm	AC01314	46mm	AC01329	61mm	AC01664	76mm
AC01300	32mm	AC01315	47mm	AC01330	62mm	AC01665	77mm
AC01301	33mm	AC01316	48mm	AC01331	63mm	AC01666	78mm
AC01302	34mm	AC01317	49mm	AC01332	64mm	AC01698	79mm
AC01303	35mm	AC01318	50mm	AC01333	65mm	AC01699	80mm
AC01304	36mm	AC01319	51mm	AC01334	66mm		

HSS BROACH CUTTER

Standard Range
(3/4" shank for through holes
up to 25mm) - Short Series



HSS BROACH CUTTER
32MM DIA X 25MM



HSS BROACH CUTTER
44MM DIA X 75MM

Stock Code	Dia.	Stock Code	Dia.	Stock Code	Dia.
AC01751	8mm	AC00022	28mm	AC00041	47mm
AC01752	9mm	AC00023	29mm	AC00042	48mm
AC01753	10mm	AC00024	30mm	AC00043	49mm
AC00006	12mm	AC00025	31mm	AC00044	50mm
AC00007	13mm	AC00026	32mm	AC00045	51mm
AC00008	14mm	AC00027	33mm	AC00046	52mm
AC00009	15mm	AC00028	34mm	AC00047	53mm
AC00010	16mm	AC00029	35mm	AC00048	54mm
AC00011	17mm	AC00030	36mm	AC00049	55mm
AC00012	18mm	AC00031	37mm	AC00050	56mm
AC00013	19mm	AC00032	38mm	AC00051	57mm
AC00014	20mm	AC00033	39mm	AC00052	58mm
AC00015	21mm	AC00034	40mm	AC00053	59mm
AC00016	22mm	AC00035	41mm	AC00054	60mm
AC00017	23mm	AC00036	42mm	AC00055	61mm
AC00018	24mm	AC00037	43mm	AC00056	62mm
AC00019	25mm	AC00038	44mm	AC00057	63mm
AC00020	26mm	AC00039	45mm	AC00058	64mm
AC00021	27mm	AC00040	46mm	AC00059	65mm

HHS BROACH CUTTER

Long Series Range
(3/4" shank for through holes
up to 50mm) - Short Series



HHS BROACH CUTTER
14MM DIA X 50MM



HHS BROACH CUTTER
61MM DIA X 50MM

Stock Code	Dia.	Stock Code	Dia.	Stock Code	Dia.
AC00060	12mm	AC00078	30mm	AC00096	48mm
AC00061	13mm	AC00079	31mm	AC00097	49mm
AC00062	14mm	AC00080	32mm	AC00098	50mm
AC00063	15mm	AC00081	33mm	AC00099	51mm
AC00064	16mm	AC00082	34mm	AC00100	52mm
AC00065	17mm	AC00083	35mm	AC00101	53mm
AC00066	18mm	AC00084	36mm	AC00102	54mm
AC00067	19mm	AC00085	37mm	AC00103	55mm
AC00068	20mm	AC00086	38mm	AC00104	56mm
AC00069	21mm	AC00087	39mm	AC00105	57mm
AC00070	22mm	AC00088	40mm	AC00106	58mm
AC00071	23mm	AC00089	41mm	AC00107	59mm
AC00072	24mm	AC00090	42mm	AC00108	60mm
AC00073	25mm	AC00091	43mm	AC00109	61mm
AC00074	26mm	AC00092	44mm	AC00110	62mm
AC00075	27mm	AC00093	45mm	AC00111	63mm
AC00076	28mm	AC00094	46mm	AC00112	64mm
AC00077	29mm	AC00095	47mm	AC00113	65mm

Sizes: Larger sizes of both kinds, in either special lengths or diameter, are available to special order

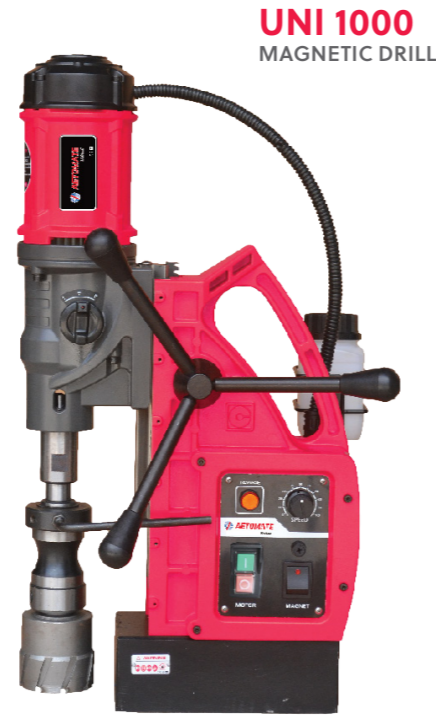
Pilot Pin
(For HHS Cutter)

Stock Code	Depth Length	Cutter Dia.
AC00147	25mm	12-65mm
AC00148	50mm	12-65mm

MAGNETIC DRILL

- Allen wrench
- Core cutter holder
- Safety belt
- Coolant tank
- Feeding handle
- User's manual

Stock Code	AC01040-1-220V AC01041-110V
Core Drill Dia	100mm
Twist Drill Dia	38mm
Tapping Dia	M35
Rated Voltage	110/220V
Rated Frequency	50-60Hz
Rated Input Power	2580W
No-load Speed	50-110/80-200/200-500/320-800rpm
Max Attraction	20500N
Cutting Depth	70-110mm (For cutter length beyond 75mm, a separate core cutter holder is required)
Stroke	330mm
Net/Gross Weight	30/55kg



UNI 1000
MAGNETIC DRILL

Standard Accessories:
Allen Wrench, Coolant Tank, Core Cutter Holder, Feeding Handle, Safety Belt, User Manual

Optional Accessories:



Twist Drilling
For drilling 1 mm - 28 mm
Twist Drill Bit with Morse
Taper Shank MT3

Core Drilling
For drilling 12 mm - 100 mm
• Core Cutter
• Core Cutter Holder

Tapping
Tap Chuck with Morse
Taper Shank MT3

Countersink Drill
Drill Bit with Morse
Taper Shank MT3

Stock Code	AC01224-110V AC01225-220V
Core Drill Dia	35mm
Rated Voltage	110/220V
Rated Frequency	50-60Hz
Rated Input Power	1650W
No-load Speed	570rpm
Max Attraction	14500N
Cutting Depth	35mm
Stroke	45mm
Net/Gross Weight	8.5/13kg



UNI 3530
LOW PROFILE
MAGNETIC DRILL

Standard Accessories
Allen Wrench, Coolant Tank, Ratchet
Wrench, Safety Belt, Usual Manual

UNI 5000N MAGNETIC DRILL

Standard Accessories
Allen Wrench, Coolant Tank,
Feeding Handle, Safety Belt,
User Manual



Stock Code	AC01027N-220V
Core Drill Dia	50mm
Twist Drill Dia	16mm
Rated Voltage	110/220V
Rated Frequency	50-60Hz
Rated Input Power	1700W
No-load Speed	280/510rpm
Max Attraction	16500N
Cutting Depth	45-75mm
Stroke	23mm
Net/Gross Weight	14.8/17.8kg

UNI 5000CS V-MAGNET MAGNETIC DRILL

Standard Accessories
Allen Wrench, Coolant Tank,
Feeding Handle, Usual
Manual



Stock Code	AC01034-220V
Core Drill Dia	50mm
Rated Voltage	220V
Rated Frequency	50-60Hz
Rated Input Power	1700W
No-load Speed	280/510rpm
Max Attraction	16,500N
Cutting Depth	40-50mm
Stroke	230mm
Net/ Gross Weight	11.7/18.2kg

UNI 5550 LOW PROFILE MAGNETIC DRILL

Standard Accessories
Allen Wrench, Coolant Tank, Ratchet
Wrench, Safety Belt, Usual Manual



Stock Code	AC01042-220V AC01043-110V
Core Drill Dia	55mm
Rated Voltage	110/220V
Rated Frequency	50-60Hz
Rated Input Power	1900W
No-load Speed	550rpm
Cutting Depth	50mm
Weight	9/13.5kg

Standard Accessories
Allen Wrench, Coolant Tank, Ratchet
Wrench, Safety Belt, Usual Manual

UNI 5550CS LOW PROFILE V-MAGNET MAGNETIC DRILL

Standard Accessories
Allen Wrench, Coolant Tank, Ratchet
Wrench, Usual Manual



Stock Code	AC01037-220V
Core Drill Dia	55mm
Rated Voltage	110/220V
Rated Frequency	50-60Hz
Rated Input Power	1900W
No-load Speed	550rpm
Max Attraction	15500N
Cutting Depth	50mm
Stroke	60mm
Weight	8.5/14.0kg

Standard Accessories
Allen Wrench, Coolant Tank, Ratchet
Wrench, Usual Manual

HAND DRILL



GBM 10 RE
HAND DRILL

Stock Code	AC00341
Power Input	450W
In Steel	10mm
In Aluminum	10mm
In Wood	25mm
No-load speed	0-2,600rpm
Weight	1.3kg



GBM 13 RE
HAND DRILL

Stock Code	AC00341-N
Model No.	GBM 13RE
Rated Input Power	600 W
Power Output	360 W
No-Load Speed 1st Gear	0 – 2,600 rpm
Rated Torque	20.0 Nm
Drill Spindle Connecting Thread	1/2"-20 UNF
Chuck Capacity, Min./Max.	1.5 – 13 mm
Tool Dimensions (W x L x H)	66 x 252 x 196 mm
Drilling Dia. In Steel	13mm
Drilling Dia. In Wood	30mm
Drilling Dia. In Aluminium	13mm
Weight	1.7 kg



GBM 13 HRE
HAND DRILL
"HIGH TORQUE"

Stock Code	AC00343
Power Input	550W
In Steel	13mm
In Aluminum	20mm
In Wood	40mm
No-load speed	0-550rpm
Torque (approx.)	40Nm
Weight	2.1kg



GSB 23-2 E
HAND DRILL

Stock Code	AC00344
Power Input	550W
In Steel	10mm
In Aluminum	8mm
in wood	20mm
No-load speed	0-2,600rpm
Weight	1.5kg

IMPACT DRILL



GSB 10 RE
IMPACT DRILL
(ALSO AVAILABLE IN 110V)

Stock Code	AC00347
Power Input	550W
In Steel	13mm
In Aluminum	20mm
In Wood	40mm
No-load speed	0-550rpm
Torque (approx.)	40Nm
Weight	2.1kg



GSB 13 RE
IMPACT DRILL

Stock Code	AC00347-N
Model No.	GSB 13RE
Rated Input Power	650 W
Chuck Capacity, Min./Max.	1.5 – 13 mm
Tool Dimensions (W x L x H)	70 x 262 x 190 mm
No-Load Speed 1st Gear	0 – 3,150 rpm
Impact Rate	0 – 47,000 bpm
Drilling Dia. In Steel	10mm
Drilling Dia. In Wood	20mm
Drilling Dia. In Concrete	13mm
Weight	2 kg



GSB 16 RE
IMPACT DRILL
(ALSO AVAILABLE IN 110V)

Stock Code	AC00346
Power Input	750W
In Steel	10mm
In Aluminum	12mm
In Wood (hard)	25mm
No-load speed	0-3,250rpm
Impact Rate	0-48,250bpm
Weight	1.8kg



GSB 20-2 RE
IMPACT DRILL

Stock Code	AC00353
Power Input	800W
In Concrete	20mm
In Steel	13mm
In Wood (hard)	40mm
No-load Speed	0-1,000/ 3,000rpm
Impact Rate	0-16,000/ 48,000bpm
Weight	2.6kg



GSB 21-2 RCT
IMPACT DRILL

Stock Code	AC00339
Power Input	1,300W
In Concrete	22/13mm
In Steel	16/10mm
in wood (hard)	40/25mm
No-load speed	0-900 3,000rpm
Max Torque	43-20.5Nm
Weight	2.8kg

IMPACT DRIVER



GSR 10.8-2-LI
IMPACT DRIVER

Stock Code	AC20087
Model No.	GSR 10.8-2-LI
Chuck Capacity, Min./Max.	1 / 10 mm
Max. Torque (Soft/Hard)	11 / 30 Nm
Max. Screw Dia	7mm
No-Load Speed	0 - 400 / 1100 rpm
Drill Spindle Thread	1/2"
Drilling Dia. In Steel	10mm
Drilling Dia. In Wood	19mm
Battery Voltage	10.8V / 1.3Ah
Weight	1.1 kg

ROTARY HAMMER



GBH 2-26 RE
ROTARY HAMMER
(ALSO AVAILABLE IN 110V)

Stock Code	AC00356
Power Input	800W
In Concrete	4-26mm
In Steel	Up to 13mm
In Wood	Up to 30mm
No-load speed	0-900rpm
Impact Rate	0-4,400bpm
Weight	2.7kg



GBH 2-26 DFR
ROTARY HAMMER

Stock Code	AC00359
Power Input	800W
In Concrete	4-26mm
In Steel	Up to 13mm
In Wood	Up to 30mm
No-load speed	0-900rpm
Impact Rate	0-4,000bpm
Weight	2.9kg

ROTARY HAMMER



GBH 3-28 DFR
ROTARY HAMMER

Stock Code	AC00354
Power Input	800W
In Concrete	28mm
In Steel	Up to 13mm
In Wood	Up to 30mm
No-load speed	0-900rpm
Impact Rate	0-4,400bpm
Weight	3.6kg



GBH 4-32 DFR
ROTARY HAMMER

Stock Code	AC00360
Power Input	900W
In Concrete	32mm
In Steel	Up to 13mm
In Wood	Up to 32mm
No-load speed	0-760rpm
Impact Rate	0-3,600bpm
Weight	4.7kg



GBH 8-45 D
ROTARY HAMMER
(WITH SDS MAX)

Stock Code	AC00363
Power Input	1,500W
Impact Energy	12.5J
No-load speed	0-305rpm
Impact Rate	0-1,380-2,720bpm
Weight	8.2kg



GBH 5-40 D
ROTARY HAMMER
(WITH SDS MAX)

Stock Code	AC00362
Power Input	900W
In Concrete	32mm
In Steel	Up to 13mm
In Wood	Up to 32mm
No-load speed	0-760rpm
Impact Rate	0-3,600bpm
Weight	4.7kg

ROTARY HAMMER



GBH 2-20RE
ROTARY HAMMER

Stock Code	AC00357
Model No.	GBH 2-20RE
Rated Input Power	600 W
Impact Energy	0 - 1.7 J
Impact Rate At Rated Speed	0 - 4,400 bpm
Rated Speed	0 - 1,400 rpm
Weight	2.3 kg
Tool Holder	SDS plus
Drilling Dia. Concrete, Hammer Drill Bits	4 - 20 mm
Max. Drilling Diameter Masonry, Core Cutters	68 mm
Max. Drilling Diameter In Metal	13 mm



GBH 2-23REA
ROTARY HAMMER

Stock Code	AC00355
Model No.	GBH 2-23REA
Voltage	240 V
Rated Input Power	710 W
Impact Energy	2.3J
Impact Rate At Rated Speed	0 - 4,400 bpm
Rated Speed	0 - 1,000 rpm
Weight	3.6 kg
Tool Holder	SDS plus
Drilling Dia. Concrete, Hammer Drill Bits	4 - 23 mm
Max. Drilling Diameter Masonry, Core Cutters	68 mm
Max. Drilling Diameter In Metal / Wood	13 / 32mm



GBH 2-24RE
ROTARY HAMMER

Stock Code	AC00351
Model No.	GBH 2-24RE
Rated Input Power	790 W
Impact Energy	2.7 J
Impact Rate At Rated Speed	0 - 4,200 bpm
Rated Speed	0 - 930 rpm
Weight	2.8 kg
Tool Dimensions (W x L x H)	83 x 367 x 210 mm
Max. Drilling Diameter In Metal / Wood	13 / 30 mm

DEMOLITION HAMMER

GSH 5
DEMOLITION HAMMER
(SDS MAX)



Stock Code	AC00364
Power Input	1,100W
Impact Rate	2,850bpm
Impact Energy	7.5J
No-load speed	27,000rpm
Voltage	240V
Frequency	50/60Hz
Weight	5.6kg

GSH 5 CE
DEMOLITION HAMMER



Stock Code	AC00358
Power Input	1,500W
Impact Rate	1,300-2,900bpm
Impact Force	2-13J
Weight	6.2kg

GSH 11 E
DEMOLITION HAMMER



Stock Code	AC00366
Power Input	1,500W
Impact Rate	900-1,890bpm
Impact Force	6-25J
Weight	10.1kg

GSH 16-30
DEMOLITION HAMMER



Stock Code	AC00384
Power Input	1,750W
Impact Rate	1,300bpm
Impact Force	45J
Weight	16.5kg

GSH 27 VC
DEMOLITION HAMMER



Stock Code	AC00367
Power Input	2,000W
Impact Rate	1,000bpm
Impact Force	69J
Weight	29.5kg

STRAIGHT GRINDER

GGG 27L
STRAIGHT GRINDER 110V



Stock Code	AC00417
Model No.	GGG 27L
Rated Input Power	500 W
Power Output	300 W
No-Load Speed	27000 rpm
Spindle Collar Dia.	35 mm
Max. Collet Diameter	8 mm
Weight	1.6 kg

GGG 28C
STRAIGHT GRINDER



Stock Code	AC00368
Power Input	650W
Max. Collet Diameter	8mm
No-load speed	28,000rpm
Voltage	230/240V
Frequency	50/60Hz
Weight	1.4kg

GGG 28LC
STRAIGHT GRINDER



Stock Code	AC00369
Power Input	650W
Max. Collet Diameter	8mm
No-load speed	28,000rpm
Voltage	230/240V
Frequency	50/60Hz
Weight	1.6kg

GGG 6 S
STRAIGHT GRINDER



Stock Code	AC00370
Power Input	1,200W
Grinding Points (diameter)	Max. 125m
No-load Speed	6,800rpm
Weight	3.9kg

GGG 5000L
STRAIGHT GRINDER



Stock Code	AC00414
Model No.	GGG 5000L
Rated Input Power	500 W
No-Load Speed	33,000 rpm
Spindle Collar Dia.	41 mm
Tool Dimensions	80 x 360 x 80 mm
Max. Collet Diameter	8 mm
Max. Grinding Tool Dia.	25 mm
Switch	Lockable Switch
Weight	1.4 kg

ANGLE GRINDER



GWS 8-100Z
ANGLE GRINDER
110V/230V

Stock Code	AC00350 / AC20001
Voltage	110V / 230V
Model No.	GWS 8-100Z
Rated Input Power	800 W
No-Load Speed	11,000 rpm
Disc Diameter	100 mm
Grinding Spindle Thread	M10
Weight	1.9 kg



GWS 17-150
ANGLE GRINDER

Stock Code	AC00340
Power Input	1,700W
No-load speed	9,300rpm
Grinder Spindle Thread	M14
Disc Dia.	150mm
Wire Cup Brush Diameter	75mm
Weight	2.4kg



GWS 750-100
ANGLE GRINDER

Stock Code	AC00348
Power Input	750W
No-load Speed	11,000rpm
Disc Diameter	100mm
Grip Size	59/54.5mm
Perimeter	187mm
Weight	1.8kg



GWS 6-100
ANGLE GRINDER
(ALSO AVAILABLE IN 110V)

Stock Code	AC00365
Power Input	670W
Grinding/ Cutting Disc Diameter	100mm
Wire Cup Brush Diameter	70mm
No-load Speed	11,000rpm
Weight	1.8kg



GWS 060
ANGLE GRINDER

Stock Code	AC00371
Model No.	GWS 060
Rated Input Power	670 W
Disc Diameter	100 mm
No-Load Speed	12,000 rpm
Grinding Spindle Thread	M10
Tool Dimensions (W x L x H)	77 x 263 x 104 mm
Weight	1.8 kg



GWS 700
4" ANGLE GRINDER

Stock Code	AC00371-2
Model No.	GWS 700
Rated Input Power	710 W
Disc Diameter	100 mm
No-Load Speed	12,000 rpm
Grinding Spindle Thread	M10
Tool Dimensions (W x L x H)	220 x 278 x 100 mm
Weight	1.7 kg



GWS 900-100S
ANGLE GRINDER

Stock Code	AC00372
Model No.	GWS 900-100S
Rated Input Power	900 W
Power Output	450 W
No-Load Speed	2,800 – 11,000 rpm
Disc Diameter	100 mm
Grinding Spindle Thread	M10
Switch	Lockable Switch
Tool Dimensions (W x L x H)	73 x 280 x 100 mm
Weight	1.9 kg



GWS 12-125S/ GWS 12-125P
ANGLE GRINDER

Stock Code	AC00373-1 AC00373-2
Power Input	1,200W
No-load speed	2,800-11,00rpm (GWS 12-125S); 11,000rpm (GWS 12-125P)
Disc Dia.	125mm
Weight	2.3kg



GWS 20-180
ANGLE GRINDER 110V

Stock Code	AC00377
Model No.	GWS 20-180
Rated Input Power	2,000 W
No-Load Speed	6,500-8,500 rpm
Disc Diameter	180 mm
Grinding Spindle Thread	M14
Main Handle	Barrel
Weight	5 kg



GWS 18-150L
6" ANGLE GRINDER

Stock Code	AC00393
Model No.	GWS 18-150L
Rated Input Power	1,800 W
No-Load Speed	10,000 rpm
Disc Diameter	150 mm
Grinding Spindle Thread	M14
Wire Cup Brush Diameter	75 mm
Rubber Backing Pad Diameter	150 mm
Switch	Lockable Switch
Weight	2.6 kg

**GWS 900-100/
GWS 900-100 S**
ANGLE GRINDER



Stock Code	AC00379 AC00372
Power Input	900W
Grinding/Cutting Disc Diameter	100mm
No-load Speed	11,000rpm (GWS 900-100) 2,800-11,000rpm
Weight	1.8/1.9kg

GWS 2200-180
ANGLE GRINDER
(ALSO AVAILABLE
IN 110V)



Stock Code	AC00374
Power Input	2,200W
Grinding/ Cutting Disc Dia.	180mm
Grinding Spindle Thread	M14
No-load speed	6,500-8500 rpm
Weight	4.2kg

CORDLESS ROTARY HAMMERS

GDX 180-LI
ROTARY HAMMER



Stock Code	AC00435
Tool Holder	1/4" Hex & 1/2" Square
No-load Speed	0-2,800rpm
Impact Rate	0-3,600bpm
Max Torque	285Nm
Battery Voltage	18V/2.0Ah
Weight	1.1kg

GBH 187-LI
CORDLESS ROTARY HAMMER
WITH ONECHUCK



Stock Code	AC00349-1
Model No.	GBH 187-LI
Battery Voltage	18.0 V
Max. Impact Energy	2.4 J
Impact Rate At Rated Speed	0 – 4,350 bpm
Rated Speed	0 – 980 rpm
Tool Holder	SDS plus, Cylindrical, HEX
Opt. App. Range In Concrete With Hammer Drill Bits	6 – 14 mm
Drilling Dia. Concrete, Hammer Drill Bits	4 – 24 mm
Weight Excl. Battery	3 kg

CORDLESS DRIVERS/DRILLS

GDS 18V-400 CORDLESS COMPACT DRIVER



Stock Code	AC00428
Tool Holder	1/2" Square
No-load speed	0-2,500rpm
Impact Rate	0-3,700bpm
Max. Torque	400Nm
Screw Dia.	M10-M20
Battery Voltage	18V/5.0Ah
Weight	1.25kg

GSR 120-LI CORDLESS DRILL/ SCREWDRIVER



Stock Code	AC00436	
Drilling Dia.	In Steel	10mm
	In Wood	20mm
Max Torque	Hard Joint	30Nm
	Soft Joint	13Nm
Max Screw Dia		7mm
No Load Speed		0-380/ 1,300rpm
Battery Voltage		12V/2.0Ah
Weight		1kg

GSR 185-LI CORDLESS DRILL/ SCREWDRIVER



Stock Code	AC00437	
Battery Voltage	18V/2.0Ah	
Head Length	162mm	
No-Load Speed	0-500/ 1,900rpm	
Max Torque	Hard	50Nm
	Soft	21Nm
Max Screw Dia.		10mm
Max Drilling	Wood	35mm
	Steel	10mm
Weight		1.3kg

CORDLESS IMPACT WRENCH

GDS-18V-LI HT CORDLESS IMPACT WRENCH



Stock Code	AC00433
Model No.	GDS-18V-LI HT
Max. Torque (Soft/Hard)	650 Nm
Rated Impact Rate	0 - 2100 bpm
Max. Screw Dia	M 12 - M 20
Bit Holder	1/2" External Square
No-Load Speed	0 - 1900 rpm
Battery Voltage	18 V

CORDLESS ANGLE GRINDER

GWS 18 V-10 CORDLESS ANGLE GRINDER



Stock Code	AC00420
No-load speed	9,000rpm
Roughing/ Cutting Disc	100mm
Battery Voltage	18V/30Ah
Weight	2.1kg
Grinding Spindle Thread	M10

ELECTRIC PLANER



GHO 10-82
ELECTRIC PLANER

Stock Code	AC00415
Model No.	GHO 10-82
Rated Input Power	710 W
Planing Width	82 mm
Planing Depth	0 - 1 mm
Weight	2.5 kg
Adjustable Rebating Depth	0 - 9 mm
No-Load Speed	16,500 rpm
Tool Dimensions (W x L x H)	156 x 284 x 173 mm

BLOWER

GBL 650 BLOWER



Stock Code	AC00391-1
Rated input power	650 W
Weight	1.7 kg
Sound pressure level	103 dB(A)
Sound power level	95 dB(A)
Uncertainty K	3 dB

GBL 82-270 BLOWER



Stock Code	AC00401
Power Input	820W
No-load speed	16,000rpm
Air Volume	4.5m³/min
Weight	1.8kg

SABRESAW



GSA 1100E
SABRESAW

Stock Code	AC00397
Model No.	GSA 1100E
Rated Input Power	1,100 W
Saw, Stroke Length	28 mm
Stroke Rate At No Load	0 - 2,700 spm
Weight	3.6 kg
Tool Dimensions (W x L x H)	95 x 497 x 160 mm
Cutting Depth In Wood	230 mm
Cutting Depth In Metal Profiles And Metal Pipes	20 mm

JIGSAW

GST 750
JIGSAW



Stock Code	AC00392-1
Rated input power	520 W
Voltage	230 V
Saw, stroke length	20 mm
Weight	2.37 kg
Bevel angle	45 – 45 °

CIRCULAR SAW

GKS 130
CIRCULAR SAW



Stock Code	AC00389-2
Power Input	1,300W
Blade Dia.	184mm
Max Cutting Capacities	at 90° 64mm
	at 45° 45mm
No-load Speed	5,800rpm
Weight	4.1kg

MITRE SAW

GCM 10MX
MITRE SAW



Stock Code	AC00383
Power Input	1,700W
Blade Size	25.5mm
Arbour Size	25.4mm
No-load Speed	4,800rpm
Max. Mitre	45°L/52°R
Max. Cutting Capacity	89x89mm
Weight	3.9kg

FOAM CUTTER

GSG 300
FOAM CUTTER



Stock Code	AC00416
Power Input	350W
Cutting Capacity	300mm
No-load Stroke Rate	3,200spm
Weight	1.6kg

NIBBLER

GNA 2.0
NIBBLER



Stock Code	AC00410
Power Input	500W
Mild Steel	2.0mm
Stainless Steel	1.0mm
No-load Speed	2,400 stroke/min
Weight	2.0kg

BENCH GRINDER

GBG 60-20
BENCH GRINDER



Stock Code	AC00376
Power Input	600W
No-load speed	(50Hz) 3,600rpm
	(60Hz) 3,500rpm
Arbour	32.00mm
Disc Diameter	200mm
Weight	17kg

STIRRER/MIXER DRILL

GRW 12
STIRRER/ MIXER DRILL



Stock Code	AC00408
Rated Torque	12,0Nm
Connector Type	M14 inside thread
Max. Paddle Ø	140mm
Incl. Paddle Ø	140mm
No-load Speed	0-1,000rpm
Weight	5.3kg

ORBITAL SANDER

GSS 20-18
ORBITAL SANDER



Stock Code	AC00378-1
Power Input	200W
No-load Speed	12,000rpm
Orbital Stroke Rate	24,000rpm
Orbit Diameter	2mm
Weight	1.5kg

BELT SANDER

GBS 75A
BELT SANDER



Stock Code	AC00381
Rated Input	710W
No-load Belt Speed	300m/min
Sanding Surface	75x130mm
Belt Size	75x533mm
Weight	3.2kg

HOT AIR GUN



GHG 18-60
HOT AIR GUN

Stock Code	AC00403
Power Input	1,800W
Temperature	50/400/ 600°C
Air Flow	250/350/500 litre/min
Weight	0.52kg



GHG 20-63
HOT AIR GUN
(ALSO AVAILABLE IN 110V)

Stock Code	AC00404
Power Input	2,000W
Temperature	50-630°C
Air Flow	150/300/500 litre/min
Weight	0.65kg

DIGITAL INCLINOMETER

GIM 60 L
DIGITAL
INCLINOMETER



Stock Code	AC00424
Measuring Range	0°-360°
Electronics Measurement Accuracy 0°/90°	±0.05°
Electronics Measurement Accuracy 1°/89°	±0.2°
Laser Working Range	30m
Laser Accuracy	±0.5mm/m
Batteries	1x9(laser) 2x1.5(AAA)
Voltage	9VDC
Weight	0.9kg

GIM 120
DIGITAL
INCLINOMETER



Stock Code	AC00427
Measuring Range	0°-360° (4X90°)
Electronics Measurement Accuracy 0°/90°	±0.05°
Electronics Measurement Accuracy 1°/89°	±0.2°
Electronic Measurement Accuracy, Vials	±0.057° = ±1mm/m
Power Supply	4x1.5V LR6 (AA) or 4x1.2V HR6 (AA)
Voltage	9VDC
Weight	1.3kg

GAM 220
DIGITAL
INCLINOMETER



Stock Code	AC00426
Measuring Range	0°-220°
Electronics Measurement Accuracy 0°/90°	±0.1°
Electronics Measurement Accuracy 1°/89°	±0.05°
Power Supply	4x1.5V LR6 (AA) or 4x1.2V HR6 (AA)
Weight	1.3kg

LASER RANGE FINDER

GLM 40
LASER RANGE FINDER



Stock Code	AC00430
Working Range	0.15-40m
Laser Class	2
Measurement Accuracy	±2mm
Batteries	2x 1.5V LR03(AAA)
Weight	0.5kg

GLM 100 C
LASER RANGE FINDER



Stock Code	AC00421
Laser Diode	635nm, <1mW
Measuring Range	0.05-100m
Measuring Accuracy	±1.5mm
Measuring Units	m/cm/mm
Batteries	Lithium-Ion
Memory Capacity (values)	50+1
Weight	0.14kg

GLL 3-80P
LINE LASER



Stock Code	AC00402
Laser Diode	640nm, <1mW
Working Range	20m
Working Range with Receiver	80m
Leveling Accuracy	±0.2mm/m
Plane	3
Batteries	4x1.5V LR6(AAA)
Voltage	6VDC
Weight	0.76kg

DETECTOR



D-TECT 120
DETECTOR

Stock Code	AC00920
Detection Mode	Universal, concrete, drywall
Detection Object	Ferrous metals, non-ferrous metals, live cables, wooden objects and *water-filled plastic pipes
Max. Detection Depth	120mm
Accuracy	±10mm
Power Supply	4x1.5V LR6(AAA)
Weight, approx.	0.5kg

CONCRETE CUTTER



GDC 140
CONCRETE CUTTER

Stock Code	AC00386
Model No.	GDC 140
Rated Input Power	1,400 W
No-Load Speed	13,200 rpm
Cutting depth	35 – 35 mm
Weight	2.9 kg
Disc Diameter	115 mm



GDM 121
CONCRETE CUTTER

Stock Code	AC00386-1
Model No.	GDM 121
Rated Input Power	1,250 W
Saw Blade Diameter	110 mm
No-Load Speed	14,500 rpm
Weight	2.8 kg
Cable Length	2.1 m
Saw Blade Bore Diameter	20 mm
Tool Dimensions	210 x 225 x 160 mm
Max. Cutting Capacity In Wood (90°)	34 mm



GDM 13-34
CONCRETE CUTTER

Stock Code	AC00386-2
Model No.	GDM 13-34
Rated Input Power	1,300 W
Saw Blade Diameter	110 mm
Saw Blade Bore Diameter	20 mm
No-Load Speed	12,000 rpm
Weight	2.8 kg
Tool Dimensions	210 x 225 x 175 mm
Max. Cutting Capacity In Wood (90° / 45°)	34 / 22 mm

CUT OFF MACHINE

GCO 220
CUT OFF MACHINE



Stock Code	AC00382
Model No.	GCO 220
Cutting Disc Diameter	355 mm
Cutting Disc Bore	25.4 mm
No-Load Speed	3,800 rpm
Rated Input Power	2,200 W
Cutting Capacity At Rectangle 0°	100 x 196 mm
Cutting Capacity At Square 0°	119 x 119 mm
Cutting Capacity At L-Profile 0°	130 x 130 mm
Cutting Capacity At Rectangle 45° Mitre	107 x 115 mm
Cutting Capacity At Square 45° Mitre	110 x 110 mm
Cutting Capacity At L-Profile 45° Mitre	115 x 115 mm
Tool Dimensions	256 x 520 x 400 mm
Weight	15 kg

SHEAR



GSC2.8
SHEAR

Stock Code	AC00409
Model No.	GSC2.8
Cutting Capacity In Steel (400 N/mm²), Max.	2.8 mm
No-Load Stroke Rate	2,400 spm
Material That Can Be Processed	Steel up to 400 N/mm² at 2.8 mm
Smallest Radius	38 mm
Stroke Rate Under Load	1,500 spm
Weight	2.7 kg
Tool Dimensions (L x H)	292 x 205 mm
Cutting Capacity In Steel (600 N/mm²), Max.	2.2 mm
Cutting Capacity In Steel (800 N/mm²), Max.	1.9 mm
Cutting Capacity In Aluminium (200 N/mm²), Max.	3.5 mm

LINE LASER

GRL 350 HV
LINE LASER



Stock Code	AC00395
Model No.	GRL 350 HV
Laser Diode	630-650nm, <5mW
Working Range	up to 60m
Self-levelling Range	± 0.5°
Tripod Mount	5/8"
Batteries	2 x 1.5V LR20 (D)
Weight	1.81 kg

GLL 2-50 CG
LINE LASER



Stock Code	AC00396
Model No.	GCL 2-50 CG
Laser Diode	Line:500-540nm<10mW / Point:630-650<1mW
Working Range	20m (50mwith Receiver LR7)
Working Range Of Plumb Point	10m (up anddown)
Leveling Accuracy	± 0.3mm/m
Self-Levelling Range	± 4°
Tripod Mount	1/4"
Batteries	4 x 1.5V LR6(AA) / 108V or 12V Li-ion Battery)
Weight	0.58 kg

HIGH PRESSURE CLEANER

AQUATAK 125
HIGH PRESSURE
CLEANER



AQUATAK 130
HIGH PRESSURE
CLEANER



GHP 6-14
HIGH PRESSURE
CLEANER



Stock Code	AC00405
Model No.	AQUATAK 125
Motor Output	1500 W
Pressure	125 bar
Flow Rate	360 l/h
Max. Temp	40°C
Hose Length	5m PVC
Weight	3.8 kg

Stock Code	AC00406
Model No.	AQUATAK 130
Motor Output	1700 W
Pressure	130 bar
Flow Rate	380 l/h
Max. Temp	40°C
Hose Length	6m PVC
Weight	7.8 kg

Stock Code	AC00412
Model No.	GHP 6-14
Motor Output	2600 W
Pressure	150 bar
Flow Rate	650 l/h
Hose Length	10m
Weight	25.6 kg

VACUUM CLEANER

GAS 15
VACUUM CLEANER



Stock Code	AC00413
Model No.	GAS 15
Weight	6 kg
Container volume, net	10 l
Rated input power	1,100 W
Container volume, gross	15 l
Container volume, net, water	8 l
Tool dimensions (L x H)	360 x 440 mm
Filter surface area	2,300 cm ²
Max. airflow rate (turbine)	53 l/s
Max. vacuum pressure (turbine)	270 mbar
Wheels, number	4



T101AO
JIGSAW BLADE 2608630031 WOOD
AC00440

- T 101 AO Clean for Wood Jigsaw Blade delivers clean curved cuts in wood
- Precision-ground teeth with a taper-ground body and narrow blade width enable curved cuts with spotless results
- Pointed tooth design reduces tear-out
- Fits all T-shank jigsaws



T111C
JIGSAW BLADE 2608630033 WOOD
AC00442

- T 111 C Basic for Wood Jigsaw Blade delivers straight cuts in wood
- Milled, side-set teeth are ideal for cuts without special requirements
- High carbon steel blade material is appropriate for cutting softwood and non-abrasive woodworking materials
- Fits all T-shank jigsaws



T119B
JIGSAW BLADE 268630037 WOOD
AC00443

- T 119 B Basic for Wood Jigsaw Blade delivers straight cuts in wood
- Milled, wavy-set teeth are ideal for cuts without special requirements
- High carbon steel blade material is appropriate for cutting softwood and non-abrasive woodworking materials
- Fits all T-shank jigsaws



T144D
JIGSAW BLADE 2608630040 WOOD
AC00444

- T 144 D Speed for Wood Jigsaw Blade delivers fast straight cuts in wood
- Sharp-ground, side-set teeth enable quick results
- High carbon steel blade material is appropriate for cutting softwood and non-abrasive woodworking materials
- Fits all T-shank jigsaws



T308B
JIGSAW BLADE 2608663751 WOOD
AC00450

- T 308 B Extra-Clean for Wood Jigsaw Blade delivers extra-clean straight cuts in wood
- Precision-ground teeth with taper-ground body cut cleanly
- Two rows of teeth arranged at different angles provide tear-free cuts at the top and bottom surfaces
- Fits all T-shank jigsaws



T101B
JIGSAW BLADE 2608630030 WOOD
AC00439

- T 101 B Clean for Wood Jigsaw Blade delivers clean straight cuts in wood
- Precision-ground teeth with taper-ground body enable spotless results
- High carbon steel material is appropriate for cutting softwood and non-abrasive woodworking materials
- Fits all T-shank jigsaws



T118GFS
JIGSAW BLADE 2608636442 STAINLESS STEEL
AC00454

- T 118 GFS Basic for Stainless Steel Jigsaw Blade makes straight cuts in metal
- Milled, wavy-set tooth geometry designed for cutting stainless steel
- Bi-metal, fully hardened high-speed steel tooth strip and highly elastic carbon steel body to cut stainless steel sheets
- Fits all T-shank jigsaws



T118A
JIGSAW BLADE 2608631013 METAL
AC00455

- T 118 A Basic for Metal Jigsaw Blade makes straight cuts in metal
- Milled, wavy-set teeth are ideal for cuts without special requirements
- Fully hardened, high-grade HSS blade material is appropriate for cutting non-perforated metal sheets
- Fits all T-shank jigsaws



T118B
JIGSAW BLADE 2608631014 METAL
AC00456

- T 118 B Basic for Metal Jigsaw Blade makes straight cuts in metal
- Milled, wavy-set teeth are ideal for cuts without special requirements
- Fully hardened, high-grade high-speed steel blade material is appropriate for cutting non-perforated metal sheets
- Fits all T-shank jigsaws



T127D
JIGSAW BLADE 2608631017 ALUMINIUM
AC00457

- T 127 D Special for Alu Jigsaw Blade delivers fast straight cuts in metal
- Milled, side-set tooth geometry with large, oval-shaped gullets designed for fast cuts
- Fully hardened, high-grade high-speed steel is appropriate for cutting aluminium and non-ferrous metals
- Fits all T-shank jigsaws



T227D
JIGSAW BLADE 268631030 ALUMINIUM
AC00458

- T 227 D Special for Alu Jigsaw Blade delivers fast curved cuts in metal
- Milled, side-set tooth geometry with large, oval-shaped gullets is designed for fast work
- Narrow blade width enables curved cuts
- Fits all T-shank jigsaws



T218A
JIGSAW BLADE 2608631032 METAL
AC00459

- T 218 A Basic for Metal Jigsaw Blade delivers curved cuts in metal
- Milled, wavy-set teeth are ideal for cuts without special requirements
- Narrow blade width is optimised for curved cuts
- Fits all T-shank jigsaws



T118AF
BI-METAL JIGSAW BLADE METAL
AC00929

- T 118 AF Flexible for Metal Jigsaw Blade is breakproof when making straight cuts in metal
- Milled, wavy-set teeth designed for cutting sheet metal
- Bi-metal, fully hardened high-speed steel tooth strip and highly elastic carbon steel body reduce risk of breakage
- Fits all T-shank jigsaws



T345XF
BI-METAL JIGSAW BLADE 2608634993
WOOD/METAL
AC00933

- T 345 XF Progressor for Wood and Metal Jigsaw Blade delivers fast straight cuts in thin and thick wood with metal
- Tooth geometry with a progressively increasing tooth pitch allows for work in materials with a wide range of densities
- Milled, side-set teeth are designed for fast cuts
- Fits all T-shank jigsaws



S922BF
SABRE SAW BLADE 2608656014 METAL/FAST CUT
AC00946

- S 922 BF Flexible for Metal Reciprocating Saw Blade is optimised for fast cuts in metal
- Tooth pitch is specially designed for working at high speeds
- BIM blade is engineered for long lifetime when cutting regular-strength steel
- Fits all S-shank reciprocating saws



S1122BF
SABRE SAW BLADE 2608656019 THICK METAL
AC00947

- S 1122 BF Flexible for Metal Reciprocating Saw Blade is optimised for flush cutting in metal
- 225 mm length and standard-gauge material thickness of 0.9 mm enable excellent flush cuts
- Tooth pitch of 1.8 mm for working at high speeds
- Fits all S-shank reciprocating saws



S922EF
SABRE SAW BLADE 2608656015 THIN METAL
AC00949

- S 922 EF Flexible for Metal Reciprocating Saw Blade is optimised for a wide range of applications in metal
- Fine tooth pitch cuts materials of all common thicknesses
- BIM blade is engineered for long lifetime when cutting regular-strength steel
- Fits all S-shank reciprocating saws



T244D
JIG SAW BLADE
TC00042

- T 244 D Speed for Wood Jigsaw Blade delivers fast curved cuts in wood
- Sharp-ground, side-set teeth produce fast cuts
- Narrow blade width optimised for curved cuts
- Fits all T-shank jigsaws



T234X
JIG SAW BLADE
AC20075

- T 234 X Progressor for Wood Jigsaw Blade for use in thick or thin wood delivers clean straight cuts
- Tooth geometry with a progressively increasing tooth pitch allows for use in materials with a wide range of densities
- Combination of taper-ground body, precision-ground teeth and multiple-ground Japan Tooth geometry enables clean cutting
- Fits all T-shank jigsaws



T101BR
JIGSAW BLADE 2608630014 WOOD
AC00438

- T 101 BR Clean for Wood Jigsaw Blade delivers clean straight cuts in wood
- Precision-ground teeth with taper-ground body produce clean results
- High carbon steel material is appropriate for cutting softwood and non-abrasive woodworking materials
- Fits all T-shank jigsaws



T101D
JIGSAW BLADE 2608630014 WOOD
AC00441

- T 101 D Clean for Wood Jigsaw Blade delivers clean straight cuts in wood
- Precision-ground teeth with taper-ground body produce clean results
- High carbon steel material is appropriate for cutting soft wood and non-abrasive woodworking materials
- Fits all T-shank jigsaws



T234X
JIGSAW BLADE 2608630032 WOOD
AC00445

- T 234 X Progressor for Wood Jigsaw Blade for use in thick or thin wood delivers clean straight cuts
- Tooth geometry with a progressively increasing tooth pitch allows for use in materials with a wide range of densities
- Combination of taper-ground body, precision-ground teeth and multiple-ground Japan Tooth geometry enables clean cutting
- Fits all T-shank jigsaws



T244D
JIGSAW BLADE 2608633528 WOOD
AC00446

- T 244 D Speed for Wood Jigsaw Blade delivers fast curved cuts in wood
- Sharp-ground, side-set teeth produce fast cuts
- Narrow blade width optimised for curved cuts
- Fits all T-shank jigsaws



T119BO
JIGSAW BLADE 2608630310 WOOD
AC00447

- T 119 BO Basic for Wood Jigsaw Blade makes curved cuts in wood
- Milled, wavy-set teeth are ideal for cuts without special requirements
- Narrow blade width is optimised for curved cuts
- Fits all T-shank jigsaws



T144DP
JIGSAW BLADE 2608630310 WOOD
AC00448

- T 144 DP Precision for Wood Jigsaw Blade delivers fast, precise straight cuts in wood
- Increased blade thickness prevents bending and provides exact cuts at accurate angles
- Sharp-ground, side-set teeth allow fast cuts
- Fits all T-shank jigsaws



T301CD
JIGSAW BLADE 2608637590 WOOD
AC00449

- T 301 CD Clean for Wood Jigsaw Blade delivers clean straight cuts in wood
- Precision-ground teeth with taper-ground body produce clean results
- High carbon steel blade material is appropriate for cutting softwood and non-abrasive woodworking materials
- Fits all T-shank jigsaws



T344D
JIGSAW BLADE 2608637944 WOOD
AC00451

- T 344 D Speed for Wood Jigsaw Blade makes fast straight cuts in wood
- Sharp-ground, side-set teeth produce fast cuts
- High carbon steel material is appropriate for cutting softwood and non-abrasive woodworking materials
- Fits all T-shank jigsaws



T118AHM
JIGSAW BLADE 2608630663 STAINLESS STEEL
AC00453

- T 244 D Speed for Wood Jigsaw Blade delivers fast curved cuts in wood
- Sharp-ground, side-set teeth produce fast cuts
- Narrow blade width optimised for curved cuts
- Fits all T-shank jigsaws



T318A
JIGSAW BLADE 2608631319 SANDWICH
AC00460

- T 234 X Progressor for Wood Jigsaw Blade for use in thick or thin wood delivers clean straight cuts
- Tooth geometry with a progressively increasing tooth pitch allows for use in materials with a wide range of densities
- Combination of taper-ground body, precision-ground teeth and multiple-ground Japan Tooth geometry enables clean cutting
- Fits all T-shank jigsaws



T318B
JIGSAW BLADE 2608631404 SANDWICH
AC00461

- T 101 BR Clean for Wood Jigsaw Blade delivers clean straight cuts in wood
- Precision-ground teeth with taper-ground body produce clean results
- High carbon steel material is appropriate for cutting softwood and non-abrasive woodworking materials
- Fits all T-shank jigsaws



T130 RIFF
JIGSAW BLADE 2608633104
CEREMIC/FIBRE GLASS
AC00924

- T 130 RIFF Special for Ceramics Jigsaw Blade is highly durable when making straight cuts in special materials
- Coarse carbide grit designed for prolonged use in abrasive ceramic materials
- Tooth strip welded to highly elastic carbon steel body with Carbide Technology for cutting e.g. ceramic wall tiles
- Fits all T-shank jigsaws



T144DP
BI-METAL JIGSAW BLADE
AC20088

- T 144 DP Precision for Wood Jigsaw Blade delivers fast, precise straight cuts in wood
- Increased blade thickness prevents bending and provides exact cuts at accurate angles
- Sharp-ground, side-set teeth allow fast cuts
- Fits all T-shank jigsaws



T118EFS
BI-METAL JIGSAW BLADE STAINLESS STEEL
AC00928

- T 118 EFS Basic for Stainless Steel Jigsaw Blade makes straight cuts in metal
- Milled, wavy-set tooth geometry designed for cutting stainless steel
- Bi-metal, fully hardened high-speed steel tooth strip and highly elastic carbon steel body to cut stainless steel sheets
- Fits all T-shank jigsaws



T144DF
BI-METAL JIGSAW BLADE WOOD/NAIL
AC00930

- T 144 DF Speed for Hard Wood Jigsaw Blade delivers fast straight cuts in wood
- Sharp-ground, side-set teeth make fast cuts
- Bi-metal, fully hardened high-speed steel tooth strip and highly elastic carbon steel body for cutting hard materials
- Fits all T-shank jigsaws



T101BF
BI-METAL JIGSAW BLADE HARD WOOD
AC00931

- T 101 BF Clean for Hard Wood Jigsaw Blade delivers clean straight cuts in wood
- Precision-ground teeth with taper-ground body cut cleanly
- Bi-metal, fully hardened high-speed steel tooth strip and highly elastic carbon steel body for cutting hard materials
- Fits all T-shank jigsaws



S1531L
SABRE SAW BLADE 2608650613 COARSE GREEN WOOD
AC00934

- S 1531 L Top for Wood Reciprocating Saw Blade delivers clean fast cuts for pruning wooden materials
- Pointed, sharp-ground teeth are excellent for exact pruning results and also prevent damage to plants
- Large tooth pitch (5 mm) and large gullets remove material quickly, enabling rapid cutting
- Fits all S-shank reciprocating saws



S1411DF
SABRE SAW BLADE 2608654834 WOOD/METAL/CONCRETE
AC00935

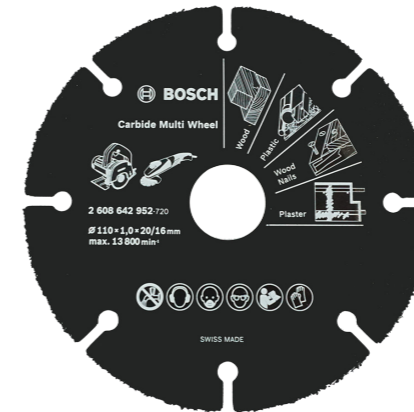
- S 1411 DF Heavy for Wood and Metal Reciprocating Saw Blade delivers fast curved cuts in wood and metal
- Large tooth pitch (4.3 mm) and side-set teeth achieve quick results
- Medium-thick gauge material (1.25 mm) provides the best balance of speed, flexibility and stability when cutting
- Fits all S-shank reciprocating saws



S611DF
SABRE SAW BLADE 2608656271 WOOD/NAIL/METAL
AC00936

- S 611 DF Heavy for Wood and Metal Reciprocating Saw Blade delivers fast plunge cuts in wood and metal
- Tooth pitch (4.3 mm) and side-set teeth for quick results
- Fully tapered body allows easy access to hard-to-reach areas
- Fits all S-shank reciprocating saws

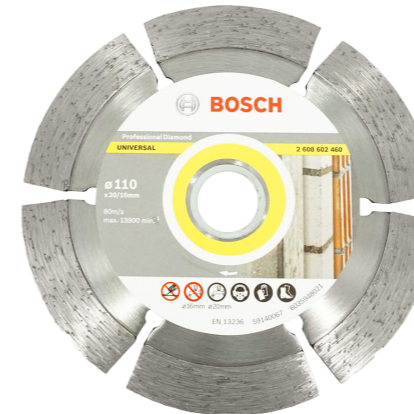
CUTTING/ GRINDING DISC/ WHEEL



TE00226
2 608 642 952 110MM
CARBIDE MULTI WHEEL

- With a carbide grit cutting edge by laser melting technology, the wheel provides a durable and safe work performance on multi material
- The thin body design and expansion slot ensure an unique cutting speed and avoid blade deformation

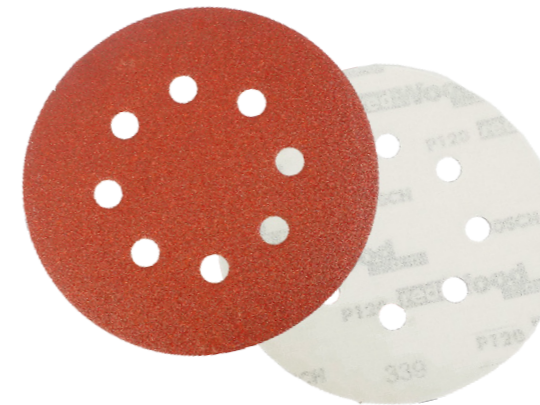
Stock Code	TE00226
Model No.	2608642952
Diameter	110 mm
Thickness	1.0 mm
Weight	0.2 kg



AE00763
4" DRY
DIAMOND BLADE

Stock Code	AE00763
Model No.	2608602460
Bore	20/16 mm
Diameter	110 mm
Height	12 mm
Width of Cutting	2 mm
Weight	0.2 kg

SANDING DISC



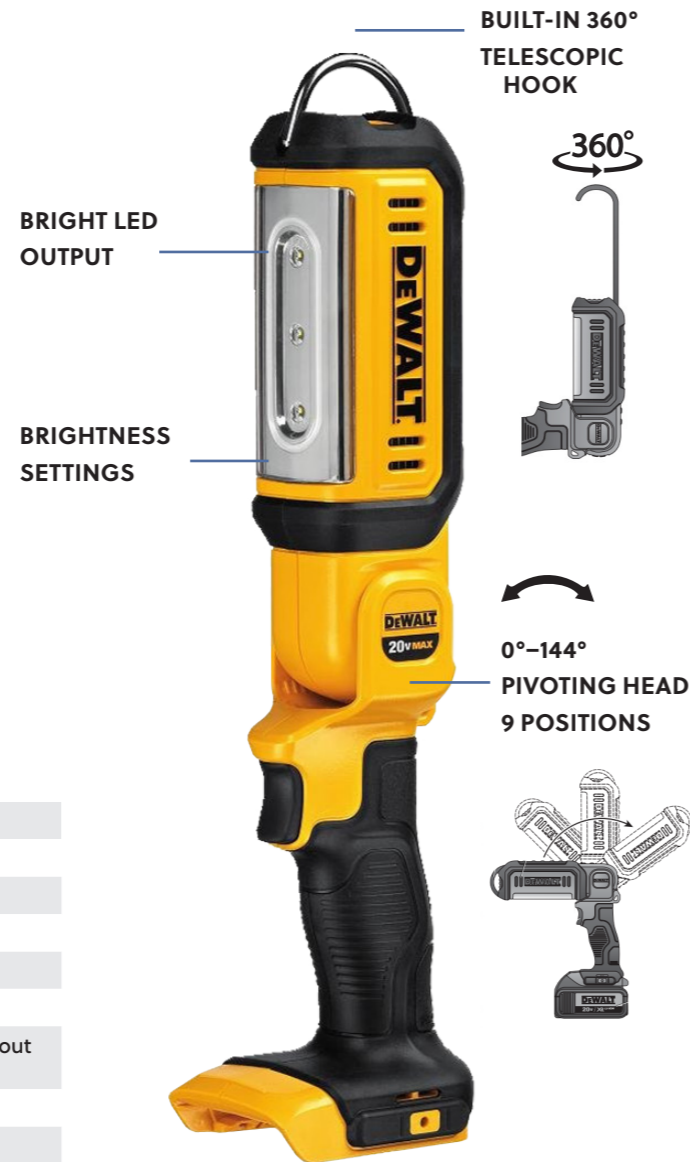
AE04221
5" G120 RED WOOD TOP SANDING
DISC X 5'S

- The electrostatic open-coated surface ensures even, controlled, consistent dust removal
- E-paper, coated with tough semi-friable aluminium oxide for consistent quality

Stock Code	Model No.	Disc Diameter (mm)
AE04217	G40	125
AE04218	G60	125
AE04219	G80	125
AE04220	G100	125
AE04221	G120	125
AE04222	G180	125
AE04223	G240	125
AE04224	G320	125
AE04225	G400	125

LED HANDHELD WORKLIGHT

- 3-LED Light with 2 brightness settings: 300 / 1000 Lumens
- Directional control of light output
- Extendable & Retractable 360-degree rotating hook
- Over-molded lens cover provides increased durability and a non-marring surface for the jobsite
- Battery-low warning: Blink every 45 seconds



Stock Code	AC01077
Model No.	DCL050
Battery/Charger included	No
Colour	Black/Yellow
Power source Type	Battery powered
Dimension (L x W x H)	22.2 X 9.9 X 37.8 cm
Weight (kg)	1.1 (With battery), 0.5 (Without battery)
Voltage	18V
Protection Rating	IP54
Run Time (1000 Lumens)	5 hours (2.0ah pack), 10 hours (4.0ah pack)

DCL050
18V XR LI-ION LED HAND HELD WORKLIGHT C/W BATTERY, CHARGER

Accessories:



18V 2.0Ah DCB183 Li-ion Battery
Stock code: AC01190



Charger DCB115 for 10.8V, 14.4V, 18V XR Li-ion Battery
Stock code: AC01189
[Charge 2.0Ah Battery pack in 30min]

ANGLE GRINDER

DW8100S-XD
100MM ANGLE GRINDER
AC00784



- Powerful long life motor deliver professional performance
- Spindle lock for easy wheel change
- 720W / 12,000rpm
- Switch: Slide
- All ball bearing construction for high durability
- Special air channels to optimize motor cooling for tool durability
- Cut-off brush to prolong motor life

DWE8200PL-XD
100MM SMALL ANGLE GRINDER
AC00786



- 850W, 12,000 rpm power and speed for 100mm grinding applications
- Advanced fan system provides maximum air flow prolonging motor life
- Accessible brushes for easy brush replacement and less downtime
- Spindle lock for quick and easy disc changes
- Compact gear case allows use in tight and confined areas

Includes: guard, flanges, spanner, grinding wheel, side handle

Stock Code	Model Number	Input Power	No-load Speed	Max. Disk Dia.	Spindle	Switch	Tool Weight
AC00784	DW8100S-XD	720W	12,000rpm	100mm	M10	SLIDE	1.58kg
AC00786	DWE8200P	850W	12,000rpm	100mm	M10	PADDLE	1.75kg

DWE8210PL-B1
850W 125MM ANGLE GRINDER



Stock Code	AC00787
Power Input	850W
Max. Disc Dia.	125mm
No-load Speed	1200rpm
Spindle Thread	M14
Weight	1.95kg
Length (with Disc)	308mm
Height	50mm
Spindle Lock	Yes
Switch Type	Paddle

DWE493
2000 W 180MM ANGLE GRINDER



Stock Code	AC00789-1
Power Input	200W
Max. Disc Dia.	180mm
No-load Speed	8500rpm
Spindle Thread	M14
Weight	4.6kg
Length (with Disc)	527mm
Height	78mm
Spindle Lock	Yes
Switch Type	Trigger

ANGLE GRINDER



DWE8100T
4" ANGLE GRINDER

Stock Code	AC00768
Model No.	DWE8100T
Power Input	720W
Max. Disc Diameter	100mm
No-Load Speed	12,000rpm
Spindle Thread	M10
Weight	1,55Kg
Length (with disc)	300mm
Height	57mm
Spindle Lock	Yes
Switch Type	Toggle

- Special plastic glue layer to protect against desert metal stator
- Body compact hand held pleasant feeling
- Fast cooling system for durability
- Rotor dustproof protection
- Brushes will wear protective rotor break



DW803
4" 110V ANGLE GRINDER

Stock Code	AC00767
Model No.	DW803
Weight	1.8 kg
Cord Length	1.5 m
No-Load Speed	10000 RPM
Product Dimensions (LxBxH)	34 x 10.5 x 12.5 cm
Disc Diameter	4 inch (100 mm)
Material Type	Plastic
Frequency	50 Hz
Power Consumption	800 W
Voltage	230 V



D28414
9" ANGLE GRINDER

Stock Code	AC00788
Model No.	D28414
Power Input	2200W
No-Load Speed	6500 rpm
Spindle Thread	M14
Disc Diameter	230mm
Weight	4.7 kg
Length (with disc)	550mm
Height	95mm
Spindle Lock	Yes
Switch Type	Trigger



DWE8200PL
4" 110V ANGLE GRINDER

Stock Code	AC00956
Model No.	DWE8200PL
Power Input	850W
Max. Disc Diameter	100mm
Spindle Thread	M10
Weight	1.75 kg
Length	276.5mm
Height	97.4mm
Spindle Lock	Yes
Slide Handle	Yes



DWE8210PL-B1
5" 110V ANGLE GRINDER

Stock Code	AC00957
Model No.	DWE8210PL-B1
Power Input	850 W
Max. Disc Diameter	125 mm
No-Load Speed	12000 rpm
Spindle Thread	M14
Weight	1.95 Kg
Length	308 mm
Height	60 mm
Spindle Lock	Yes
Switch Type	Paddle



DW810
4" 110V ANGLE GRINDER

- 680W, 10,000 rpm provides high power and speed for 100mm grinding applications
- Advanced fan system provides maximum airflow prolonging motor life
- Sealed toggle switch provides protection from dust and filings extending switch life
- Tool-free adjustable guard allows easy positioning for left or right handed use
- Spindle lock for quick and easy disc changes
- Compact gear case allows use in tight and confined areas
- Accessible brushes for easy brush replacement and less downtime

Stock Code	AC00952
Model No.	DW810
Power Input	680 watts
No Load Speed	11000 rpm
Spindle Lock	Yes
Side handle	Yes
Max. Disc Diameter	4" (100mm)
Spindle Thread	M10
Weight	1.8 kg



DW840-B1
7" 110V ANGLE GRINDER

- 13.0 Amp AC/DC, 8,000 rpm motor provides high power and speed for 7" grinding applications
- High power-to-weight ratio for greater efficiency and reduced user fatigue
- Adjustable guard can be adjusted to redirect sparks away from user
- Rear handle design for greater comfort and control
- External brush caps for easy servicing
- Sealed ball and roller bearings for extended motor life
- Spindle lock button allows for single-wrench bit changes

Stock Code	AC00959
Model No.	DW840-B1
Power Input	680 watts
No Load Speed	11000 rpm
Spindle Lock	Yes
Side handle	Yes
Max. Disc Diameter	4" (100mm)
Spindle Thread	M10
Weight	1.8 kg

COMBINATION HAMMER



D25133K-XD
26MM HEAVY DUTY
SDS-PLUS®
COMBINATION HAMMER
AC00779-1

With a innovative Extreme2 tip design, DEWALT SDS Plus Extreme Drill Bits power through masonry, concrete, and more with a high grade carbide tip that maximizes bit life. An optimized flute design allows efficient debris removal.

- Rotation-stop for light chiselling applications in brick, soft masonry and occasionally concrete
- Impact-stop for drilling in wood, steel, ceramic and screwdriving applications
- Mechanical clutch eliminates sudden high-torque reaction should the bit jam
- Electronic variable speed for total control in any application
- Ergonomic rubber coated back handle design for improved comfort in use
- Rounded ergonomic industrial design allows easy and comfortable handling in any application
- Improved sealing for maximum protection from dust ingress ensuring long tool life

Includes: (1) Depth Rod, (1) Kit Box, (1) 360° Side Handle



D25721K
48MM SDS MAX
COMBINATION HAMMER

- SHOCKS – Active Vibration Control reduces vibration felt by the user at the handles. A Perform and Protect feature
- 13.5 amp Motor delivers maximum performance and overload protection
- 11 joules of Impact Energy provides fast drilling and chipping performance
- Electronic variable speed gives the user full control of speed while drilling or chipping
- Rear side handle mount delivers a better ergonomic position to the user when drilling downward
- Electronic Soft Start provides the user more control when the trigger is pulled
- Compatible with DWH050K drilling dust extraction system
- Chipping function allows for fast demolition of walls and correction work on floors
- Trigger lock on reduces user fatigue while chipping

Stock Code	AC00773
Model No.	D25721K
Power Input	1350 W
Load Speed	132-265 rpm
Blows per Minute	1225-2450 bpm
Tool Holder	SDS-Max
Max. Drilling Capacity (Breakthrough bit)	80 mm
Max. Drilling Capacity (Concrete)	48 mm
Max. Drilling Capacity (Core bit)	115 mm
Weight	8.7 Kg
Length x Height	528x268 mm

ROTARY HAMMER



DCH263N-XJ
28MM 18V
SDS-PLUS ROTARY HAMMER
AC00780-1

The DCH263 inline cordless SDS-Plus rotary hammer is powered by a brushless motor and 18V XR batteries for powerful, fast drilling up to 28mm into solid concrete and extended runtime. This rotary hammer drill also features an Active Vibration Control handle to deliver vibration of 9.1m/s² meaning the user can work for longer, 3 modes of operation and an LED work light to illuminate the work area. Bare unit, batteries and charger sold separately.

- Ideal for drilling anchors and fixing holes into concrete, brick, and masonry from 4mm to 28mm
- Compact, lightweight and ergonomic design for improved comfort and support during extended operating periods
- Bright white LED with delay feature improves visibility

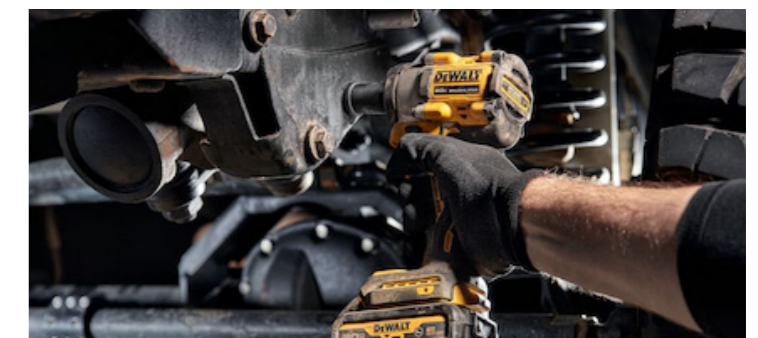
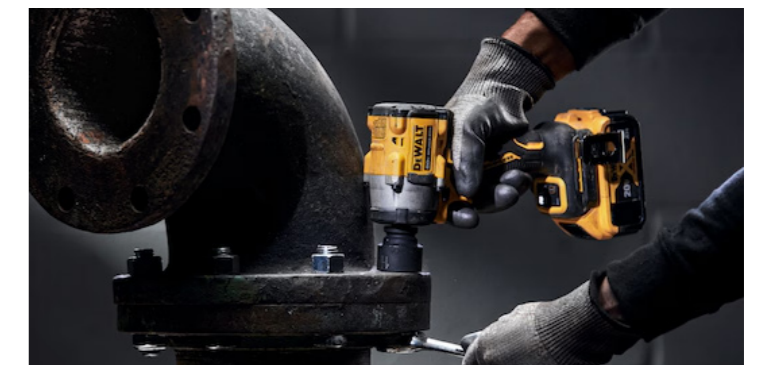
Includes: (1) Multi-Position Side Handle

COMPACT IMPACT WRENCH

DCF922B
20V MAX 1/2" COMPACT IMPACT WRENCH



Stock Code	AC00775-1
Anvil Type	Detent Pin
No-load Speed	2500rpm
Impact Rate Per Minute	3500rpm
Max. Torque	203Nm
LEDs	3
Battery Chemistry and Type	Li-ion
No. of Pieces	2
No. of Speed Settings	4
Voltage	20V MAX*



HAMMER DRILL

DCD 735C2-B1
14.4V XR HAMMER DRILL
DRIVER 1.5 AH (13MM)



Stock Code	AC00796
No. of Speed Setting	2
No-load Speed	0-550/0.1900rpm
Beats Per Minute	0.9350/ 0.32300kpm
Max. Torque (Hard/Soft)	57Nm
Chuck Capacity	1.5-13mm
Chuck Type	Plastic, Tatching
Max. Drilling Capacity (Weed/ Metal/Masonry)	35/13/13mm
Battery Chemistry	LI-ion
Battery Type	(2.15Ah (B1/A9))

DCD805M2T-B1
20V BL HAMMER DRILL



Stock Code	AC00795-1
Battery	2 x 4.0ah Battery
Voltage	20V
Max. Torque (Hard)	90 Nm
Max. Torque (Soft)	27 Nm
Power Output	460W
No-load Speed	0-650/2000 rpm
Impact Per Minute	0-11050/34000 ipm max drilling capacity: 55mm (wood), 13mm (Steel)



DCD7781D2-B1
20V BL HAMMER DRILL DRIVER
(2.0AH X2)

With more power, compact and lightweight, the DEWALT 20V MAX* Wireless Hammer Drill/Driver features Brushless Technology, which gives the tool greater efficiency, which translates into more time of use and requires little maintenance.

- Brushless motor (No carbon brushes)
- Quick-adjusting chuck
- Variable speed switch
- Lightweight and compact design
- LED Light

Stock Code	AC00797-1
Model No.	DCD7781D2-B1
Max. Torque	65 Nm
No-Load Speed	0 – 500 / 1750 rpm
Beats per Minute	0-9350/34000 bpm
Voltage	20 V
Max. Drilling Capacity	13 mm
Chuck Capacity	13 mm
Weight	1.2 kg

HAMMER DRILL



DCD776C2-B1
18V HAMMER DRILL DRIVER

- 18V XR Li-Ion compact drill driver featuring XR 1.3Ah Li-Ion battery technology
- 13 mm single sleeve chuck and spindle lock for quick and easy bit change with one hand
- Two speed settings, variable speed and reverse switch for maximum control

Stock Code	AC00797
Model No.	DCD776C2-B1
Chuck Capacity	1.5-13 mm
No-Load Speed	0-450/0-1500 rpm
Beats per Minute	0-7650/0-25500 bpm
# of Speed Settings	2
Voltage	18.0 V
Max Torque (Hard)	42 Nm
Max Torque (Soft)	24 Nm
Max. Drilling Capacity (Wood)	40 mm
Max. Drilling Capacity (Metal)	13 mm
Max. Drilling Capacity (Masonry)	13 mm
Battery Chemistry	Li-ion
Battery Capacity	C2-1.3Ah

CHIPPING HAMMER



D25811K-XD
5KG 17MM CHIPPING HAMMER

- Ideal For Light Demolition, Surface Or Preparation Chiselling Grooves, Channels Openings Etc In brick, Masonry And Light Concrete
- Demolition Application In Concrete And Stone
- Electronic Speed And Impact Energy Control For Use In Delicate/ Lighter Materials

Stock Code	AC00782
Model No.	D25811K-XD
Power Input	1050 W
Chuck Type	17 mm Hex
Beats Per Minute	3150 bpm
Single Impact Energy (EPTA 05 / 2009)	7.1 J

DIE GRINDER

D28886
DIE GRINDER



Stock Code	AC01183
Power Input	710W
No-load Speed	7000-27000 rpm
Power Output	430W
Collect Size	5mm
Weight	1.8kg
Cord Length	350 x 90 mm

DWE886P-BI
400W DIE GRINDE
(PADDLE)



Stock Code	DWE886P
Power Input	400W
No-load Speed	25000 rpm
Max. Disc Dia.	25mm
Weight	1.65 kg
Length	356mm
Switch Type	Paddle

REVERSING DRILL



DWD014
10MM VARIABLE SPEED
REVERSING DRILL
AC00769

- All new powerful motor designed for professional use
- All ball-bearing construction for greater durability and long tool life
- New ergonomic design perfectly balanced for the professional user
- Belt dip for maximum flexibility and easy handling in multi operation applications
- Variable speed switch with forward and reverse for professional flexibility
- 550W/2800rpm

Includes: chuck key

PERCUSSION DRILL



DWD024
600 WATTS
PERCUSSION DRILL
AC00772

- Variable speed control and forward and reverse mode to suit different materials
- Dust sealed switch for added durability
- High quality 13mm keyed chuck for accuracy and durability
- Jam pot construction design for added durability and ease of service
- 650W /2800rpm

Includes: chuck key, multi-position side handle and depth stop

FINISHING SANDER

DWE6411-B1
1/4 SHEET FINISHING SANDER



- The compact lightweight design make the D26441 convenient and comfortable especially when sanding those awkward areas
- Powerful enough for any job, especially suited to small areas, curved surfaces and spot sanding
- Small orbit size for a smooth finish
- Dust sealed switch and bearing for a long life

Includes: sanding sheet, paper punch and dust bag

RANDOM ORBIT SANDER

DWE6423
HEAVY-DUTY 5" RANDOM ORBIT SANDER



- Provides maximum sanding speed for smooth finishes
- Dual-plane counter-balanced fan reduces user fatigue
- Dust-sealed switch prevents contamination
- Sealed 100% ball-bearing construction
- Accepts 5", 8-hole hook and look paper
- Shop vacuum adapter for maximum dust collection

Includes: dust bag, vacuum adapter

Stock Code	Model Number	Power Input	Orbits Per Minute	Orbit Size	Paper Size	Pad Size	Tool Weight	Length x Height
AC00798	DWE6411-B1	170W	14,000 opm	1.5mm	140x114mm	108 x 114mm	1.0kg	220 x 135mm

Stock Code	Model Number	Power Input	Amps	Orbits Per Minute	Orbit Dia.	Dust Sealed Switch	Pad Size	Orbit Size	Unit Weight
AC00799	DWE6423	280W	2.0	14,000 opm	3/32 inch	Yes	125mm (5")	1.4mm	1.28 kg

DRILL DRIVER

DCD700C2 / DK2
10.8V DRILL DRIVER 1.3 Ah
(10MM)



Stock Code	AC00793
Voltage	10.8V
# of Speed Setting	2
No-load Speed	0.400/1500rpm
Max. Torque	24 Nm
Chuck Capacity	10mm
Chuck Type	plastic
Max. Drilling Capacity	20/10mm
Battery Chemistry	XR LI-ion
Battery Type	C2-1.3Ah (KR/B1/TW/AV)

HEAT GUN WITH LCD

D26414-BI
2,000W HEAT GUN
WITH LCD



Stock Code	AC00792
Power Input	2000W
Operating Temperature	50-600°C
Air Flow	650l/min
Nozzle Dia.	22mm
Overheating Protection	Yes
Weight	0.85 kg
Length	265
Height	210mm

CHOP SAW

D28720
14" (355MM)
CHOP SAW



Stock Code	AC00791
100V Stock Code	AC00774
Model No.	DW28720
Amps	15 AMPS
Blade Change	Wrench
Max Capacity (Rectangular)	4-3/4 X 5-1/3 In
Max Capacity (Round)	4-1/2"
No Load Speed	3,800 rpm
Peak Horsepower	4 Hp
Power Tool Type	Corded
Quick Lock Vise	Yes
Tool Length	21 In
Tool Weight	35.0 Lbs
Wheel Arbor	1 In
Wheel Diameter	14 In

- Ergonomically designed "D" handle provides a more comfortable hand position, reducing fatigue and increasing productivity
- Quick-Lock Vise allows for fast clamping on different size materials to increase productivity
- 45-degree pivoting fence allows for fast and accurate angle cuts
- Steel base allows user to weld jigs or stops directly onto the base
- Spindle Lock allows user to make wheel changes quickly and easily, saving time and money
- Integrated top handle allows the saw to be carried around easily

- Heavy-duty lock down pin allows head of the saw to be locked in the carrying position without the use of a chain
- Adjustable spark guard allows the users to direct sparks away from the work area
- On-board wheel change wrench allows for convenient storage and greatly reduces the risk of lost wrenches
- Compression spring provides smoother movement and increased durability versus torsion springs
- 15 amp/4 HP (maximum motor HP) motor provides overload protection, increasing performance and durability

CIRCULAR SAW



Stock Code	AC00804-1
Power Input	1500W
No-load Speed	5500 rpm
Blade Dia.	184mm
Maximum Depth of Cut at 90°/45°	65/42mm
Bevel Angle Adjustment	48°
Weight	3.6 kg
Base Material	Steel

DWE5615
1,200W 184MM COMPAD CIRCULAR SAW

PORTABLE JIG SAW



DW349R-XD
PORTABLE JIG SAW

- Compact, ergonomic, design gives user comfort and versatility in use
- 500 Watt motor gives performance and durability
- Keyed blade change for durability
- 3 pendulum action gives increased cutting performance and longer saw blade life
- Shoe bevels 45° to both left and right with presets at 0° and 45° for precise bevelled cuts
- Low profile dust extraction shield with bi-directional vacuum spout for clean, efficient cutting performance

Stock Code	AC00803
Model No.	DW349R-XD
Power Input	500 W
No Load Stroke Rate	660-3200 rpm
Stroke Length	20 mm
Bevel Capacity	/- 45 degrees
Max. Cutting Capacity (Wood)	75 mm
Max. Cutting Capacity (Steel)	5 mm
Max. Cutting Capacity (Non Ferrous Metal)	15 mm

BENCH GRINDER



DW756
6" 110V BENCH GRINDER

- Powerful 5/8 HP induction motor for heavy-duty grinding operations
- Industrial cast iron base and motor housing provide durability and prolong life
- Motor runs at 3,450 rpm for high-speed material removal
- Precision-machined aluminum tool rests allow the user to accurately position work
- Rear exhaust ports in wheel guards for smoother operation
- 12-1/2" distance between wheels for longer and larger grinding applications

Stock Code	AC00807
Model No.	DW756
Adjustable Tool Resets	Yes
Amps	4 Amps
Peak Horsepower Hp	5/8 Hp
Power Tool Type	Corded
Spindle Diameter	1/2 In
In Tool Length	15.0 In
Tool Weight	28.5 Lbs
Wheel Diameter	6"

RECIPROCATING SAW



DW304PK-XD
POSITION RECIPROCATING SAW

Stock Code	AC00800
Model No.	DW304PK-XD
Power Input	1050 W
No Load Stroke Rate	0-2800 spm
Stroke Length	29 mm
Max. Cutting Capacity (Wood)	280 mm
Max. Cutting Capacity (Steel Sections & Pipes)	100 mm
Max. Cutting Capacity (PVC)	130 mm
Weight	3.5 Kg



DW304PK
110V RECIPROCATING CUT SAW

- DEWALT DW304PK 10 Amp Reciprocating Saw
- Keyless lever-action blade clamp for quick and easy blade changes
- 0-2,800 strokes per minute and 1-1/8-inch stroke length deliver fast cutting
- Variable speed trigger allows user to instantly control speed from 0 to dialed setting
- 4-position blade clamp allows for flush cutting and increased versatility
- Powerful 10.0 Amp motor designed for heavy-duty applications
- Keyless lever-action blade clamp for quick and easy blade changes

Stock Code	AC00808
Model No.	DW304PK
Power Input	1050 W
No Load Stroke Rate	0-2800 spm
Stroke Length	29 mm
Max. Cutting Capacity (Wood)	280 mm
Max. Cutting Capacity (Steel Sections & Pipes)	100 mm
Max. Cutting Capacity (PVC)	130 mm
Weight	3.5 Kg

MULTI-PURPOSE GEARED HEAD DRILLING & MILLING MACHINE

Stock Code	AC01127
Model No.	400GCT
Drilling Capacity (Cast Iron)	40mm
Drilling Capacity (Steel)	32mm
Face Milling Capacity	76mm
End Milling Capacity	32mm
Spindle Taper	MT #3 or R-8
Spindle Nose to Table	580mm
Column Dia.	115mm
Quill Dia.	75mm
Quill Travel	120mm
Swing	550mm
Head Swivel	90° R&L
Main Motor	0.75 P.S. 1 HP
Speed of Spindle 50 Hz	50, 100, 170, 370, 1250 rpm (4P)
Speed of Spindle 60 Hz	60, 120, 200, 450, 850, 1500 rpm (4P)
Table Surface	585 x 190 mm
Cross Travel of Table	210 mm
Longitudinal Travel of Table	340 mm
Overall Height	1880 mm
T-Slot Size	14 mm
Cabinet Stand	-
Measurement (mm)	740 x 780 x 1955
N.W/G.W	325 kgs / 360 kgs

- Available for milling, boring, drilling, tapping and etc.
- Gear head can be tilted 90° right & left each
- Clutch operated micro down feed
- The headstock is composed 11 pieces precision of gear (2.0mm pitch) and all immersed in oil bath
- Available CE Standards as fig shows such as: Electrical Control System
- Cabinet Stand, Protecting Guard



400GCT
MULTI-PURPOSE
GEARED HEAD DRILLING
& Milling Machine

Capacity

Pipe: 1/8" - 2" (3mm - 50mm), 2 1/2" - 4" (62mm - 100mm)
4" - 6" (100mm - 150mm) with 141 and 161
Rod: 1/4" - 2" (6mm - 50mm)

Technical Specifications

Motor: 1/2 HP, Single-phase, 230V or 115V, 50-60Hz, Reversible Universal motor.
Switches: FOR/OFF/REV Integral safety foot switch
Chuck: RIDGID speed chuck with replaceable rocker-action jaw inserts
Rear Centering Device: Cam action, turns with chuck
Spindle Speed: 36RPM standard (no load)

Standard Equipment

Die Head: Model 811 -A or 815-A
Dies 1/2" - 3/4" BSPT/NPT, 1"-2" BSPT/NPT
Cutter: Model 820
Reamer: Model 341
Oil: 5 Litres Thread Cutting Fluid

MODEL 535 POWER THREADING MACHINE



Stock Code	Model No.	Description	Weight
AH93287	535	1/2 - 2" 115V, NPT	117.9kg
AH96507	535	1/2 - 2" 230V, NPT	116.6kg
AH96512	535	1/2 - 2" 230V, BSPT	

Capacity

Pipe: 1/4" - 4", 4" - 6" with 161 Geared Threader
Bolt: 1/4" - 2" (6mm - 50mm) up to 30 Rockwell C

Technical Specifications

Motor: 11/2 HP, Single-phase, 50Hz, induction type.
Motor Control: Reverse/OFF/Forward, heavy-duty, rotary-type and integral foot switch
Spindle Speed: 36/12RPM
Gear Box: Two-speed gear box 3:1 ratio
Chuck: Hammer-type with replaceable rocker-action jaw inserts
Rear Centering Device: Cam action
Culter: Model 764 full-floating, self-centering 1/4" - 4" with F-229 cutter wheel
Reamer: Model 744, 1/4" - 4" blade-type
Oiling: Through-die head
Pump: Self-priming, gerotor-type, automatic-reversing, constant-flow.

Standard Equipment

Die Head: 1 Model 911(711) 1/4"-2"; 1 Model 914(714) 2 1/4"-4"
Dies: 1 set each 1/2", 3/4", 1" - 2" and 2 1/2" - 4" HS dies
Tool, and Equipment: 4 Hex keys, heavy-duty F-299 cutter wheel,
3/4" combination wrench, tool box.
Oil: 5 Litres Thread Cutting Fluid.

MODEL 1224 POWER THREADING MACHINE



Stock Code	Model No.	Description	Die Head	RPM	Voltage	Frequency	Phase	Amp Draw (A)	Power	Weight	Motor Type
AH26097	1224	1/4" - 4" NPT	711/714	36/12	230V	60 Hz	1	8	1 1/2 HP	231kg	Induction
AH29863		1/4" - 4" BSPT	911/914	36/12	220V	60 Hz	1	151	1 1/2 HP	231kg	

The Model 1233 1/8" - 3" machine weighs only 56 kilograms - the lightest 3" threading machine in the world. A new designed receding die head with specially ground die produces clean, smooth, and accurate threads. The new die head features quick and simple adjustments for the thread length and depth. A powerful 1 HP motor allows the 1233 to operate efficiently, even in low voltage environments.

Capacity

Pipe: 1/8" - 3" (6mm - 75mm)
Bolt: 3/8" - 2" (10mm - 50mm)

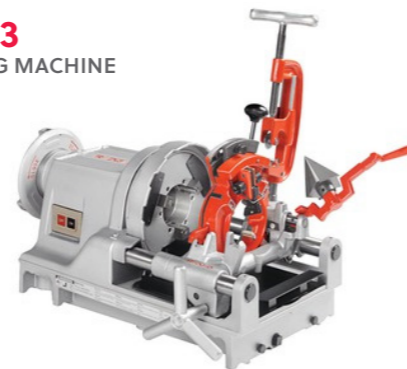
Technical Specifications

Motor: 1HP, Universal 50-60Hz
Motor Control: Reverse/Off/Forward, heavy duty, rotary type plus integral footswitch
Spindle Speed: 36RPM
Chuck: Hammer-type with replaceable, racker-action jaw inserts.
Rear Centuring Device: Cam action
Oiling System: Adjustable flow, through-the head, with an integral oil reservoir, self-priming, constant-flow, gerotor pump.

Standard Equipment

Die Head: Model 815A, 1/8" - 2", Self Opening. Model 928, 2 1/2" - 3", Self Opening Receding.
Reamer: Model 743, 1/4" - 3", 5-Fluted.
Cutter: 1 Model 763, 1/4" - 3", self-centering with E-1032 Cutter Wheel.
Dies: 1 set 1/2" - 3/4" / 1 set 1" - 2" / 2 1/2" - 3" High Speed.
Oil: 5 Litres Thread Cutting Fluid.

MODEL 1233 POWER THREADING MACHINE



Stock Code	Model No.	Description	Weight	
			lbs.	kg.
AH20210	1233	1/2" - 3" 115V, NPT	123	56
AH54577	1233	1/2" - 3" 230V, NPT	120	54

Features

- Heavy-duty proven performance.
- Lightweight, portable design.
- Fast transport and set-up.
- Self-contained oil system with adjustable flow control.
- Versatility for threading and grooving.
- Quiet operation.

Technical Specifications

Pipe Capacity: 1/8" - 2" (3mm-50mm).
Bolt Capacity: 1/4" - 2" (6mm-50mm).
Motor Control: Heavy-duty rotary forward/off/reverse and integral foot switch.
Chuck: Hammer-type with replaceable, rocker-action jaw inserts.
Oiling System: Through-the-head, with integral oil reservoir with self-priming, constant-flow, gerotor pump.

MODEL 300 COMPACT THREADING MACHINE



Stock Code	Model No.	Description	Voltage	Weight
AH45038	300 Compact	1/2" - 2" BSPT Hammer Chuck	230V	52.3kg
AH45048	300 Compact	1/2" - 2" NPT Hammer Chuck	230V	52.3kg

The RIDGID No. 918 Hydraulic Roll Groover features a powerful 15 ton hydraulic cam in a compact, easy to transport unit. With one man set-up and operation, the 918 is the ideal groover for job-site requirements. Designed to provide maximum versatility, the 918 is capable of grooving up to 12" Schedule 10 thin wall and 8 Schedule 40 standard wall pipes. Groove and drive roll change-out is accomplished in seconds. A unique spindle lock feature assists roll change-out using tools.

Capacity

1" - 8" Schedule 40 steel
1" - 12" Schedule 10 Steel

Technical Specifications

Roll set for 2" - 6" Schedule 10/40.
Roll set for 8" - 12" Schedule 10 and 8" Schedule 40.
Tool Box, Hex Key, Box Wrench.

Adapts to

RIDGID 300, 300 Compact, 535, 1822, 1233 and 1224 Threading Machines

Optional drive and groove roll sets available for

1" Schedule 10/40
1 1/4" - 1 1/2" Schedule 10/40
2" - 6" Copper
2" - 6" Schedule 80 PVC

MODEL 918 HYDRAULIC ROLL GROOVER



Stock Code	Model No.	Description	Weight
AH48297	918-1	918 Roll Groover w/300 Power drive Mount Kit	47.2kg
AH48387	918-5	918 Roll Groover w/535 Carriage Mount Kit	53.1kg
AH47222	918	918 Roll Groover only	34.0kg

• Heavy-duty hand-held power drive

- Features reversible Universal motor
 - Capacity 1/8" - 2" (6mm-50mm) pipe
- Designed for RIDGID No. 12-R die heads.
Other RIDGID die heads (OO-R, OORB, 11-R) using adapters, threading 2 1/2" through 6" (62mm-150mm) with 141/161 geared threaders

Technical Specifications

Motor: Universal 1/2, HP, 230V or 115V, 25-60Hz.
Switch: Heavy-duty trigger "on/off" with separate top mounted slide switch for forward/reverse selection.
Gear Head: All-spur gear reduction. Spring loaded adapter pawl. Hardened steel spindle gear.
Body: Cast aluminum
Support Arm: No 775

MODEL 700 POWER THREADING DRIVE



Stock Code	Model No.	Description	Pipe Threading Capacity		Red Threading Capacity		Max. Geared Threader Cap.		Weight
			in	mm	in	mm	in	mm	
AH41935	700	115V 25-60Hz	1/8 - 2	3-50	1/4 - 1	6-25	6	150	14kg
AH41940	700	230V 25-60Hz	1/8 - 2	3-50	1/4 - 1	6-25	6	150	14kg

EXPOSED RATCHET THREADERS

Die heads lock into ratchet assembly and are removed by pulling out the ratchet knob. Ratchet handle included.

Model No.	Capacity		Stock Code				Weight kg
	in	mm	NPT	BSPT	NPSM	BSFP	
OO-R	1/2 - 1	12-25	AH36345	65175	-	-	4.5
OO-R	3/8 - 1	10-25	AH36355	-	-	-	5.1
OO-R	1/8 - 1	3-25	AH36375	-	-	-	6.2
12-R	1/2 - 1 1/4	12-32	AH36480	-	-	-	10.8
12-R	1/2 - 2	12-50	AH36475	65255	36510	-	15.8
12-R	1/8 - 2	3-50	AH36505	65285	-	-	20.7



PIPE DIE HIGH SPEED STEEL

Alloy Steel BSPT & NPT

Stock Code	Size No.
AH47735	1/8" NPT-Alloy
AH47740	1/4" - 3/8" NPT-Alloy
AH47745	1/2" - 3/4" NPT-Alloy
AH47750	1" - 2" NPT-Alloy
AH47775	1/8" HSS
AH47780	1/4" - 3/8" NPT-HSS
AH47785	1/2" - 3/4" NPT-HSS
AH47790	1" - 2" NPT-HSS
AH66655	1/8" BSPT-Alloy
AH66660	1/4" - 3/8" BSPT-Alloy
AH66665	1/2" - 3/4" BSPT-Alloy
AH66670	1" - 2" BSPT-Alloy
AH66670	1/8" BSPT-HSS
AH66675	1/4" - 3/8" BSPT-HSS
AH66780	1/2" - 3/4" BSPT-HSS
AH57082	1/2" - 3/4" BSPT-HSS
AH33642	2 1/2" - 4" BSPT-HSS
AH26192	2 1/2" - 4" NPT-HSS

POWER THREADING / RECEDING THREADERS

- 141 threaders 2 1/2", 3", 3 1/2", 4" pipe with one set of dies.
- 161 threaders 4", 4 1/2", 5", 6" pipe with one set of dies.
- Jaw clutch prevents jamming
- Simple adjustment for tapered or straight threads
- Cam-type workholder sets instantly
- Fully enclosed gearing
- Right-hand only



Stock Code	Model No.	Description	Capacity		Weight kg
			in	mm	
AH65380	141	BSPT with 1 set High-Speed Dies	2 1/2 - 4	62-100	42.3
AH36620	141	NPT with 1 set High-Speed Dies	2 1/2 - 4	62-100	42.3
AH36630	161	NPT with 1 set High-Speed Dies	4-6	100-150	71.8
AH39380	D-1440	Ratchet and Handle	-	-	4.3
AH96725	-	Metal Carrying Case for 141 Geared Threader	-	-	7.7

DIE HEADS FOR ALL 2" THREADING MACHINES

NO. 815A
SELF-OPENING
DIE-HEAD



NO. 811A
UNIVERSAL
DIE-HEAD



NO. 555
DIE-HEAD



NO. 531 & 532
BOLT DIE-HEADS



Stock Code	Model No.	Description	How Opened	Thread Direction	Oil Thru Head	Dies Used	Pipe Cap.	Bolt Cap.	Replaces	Weight Kg
Machine BSPT Die Heads (Less Dies)										
AH97070	811A	Brit. Universal	Q.O.	RH	Yes	Univ.	1/8 - 8	1/4 - 2	811/841	5.7
AH97080	815A	Brit. Universal	S.O.	RH	Yes	Univ.	1/8 - 8	1/4 - 2	815/845	5.9
AH23297	856	Brit. Universal	Q.O.	LH	Yes	Univ.	1/8 - 8	-	842	5.7
Machine Bolt Die Heads (Less Dies)										
AH97045	531	Bolt	Q.O.	RH/LH	Yes	500B	-	1/4 - 1	500B	3.4
AH97050	532	Bolt	Q.O.	RH/LH	Yes	500B	-	1 1/4 - 2	500B	4.1
Machine NPT Die Heads (Less Dies)										
AH97065	811A	Universal	Q.O.	RH	Yes	Univ.	1/8 - 2	1/4 - 2	811/841	5.7
AH97075	815A	Universal	S.O.	RH	Yes	Univ.	1/8 - 2	1/4 - 2	815/845	5.9
AH23282	842	Universal	Q.O.	LH	Yes	Univ.	1/8 - 2	-	842	5.7
AH10491	555	555	Q.O.	RH	Yes	Dual/Bolt	1/8 - 3/4	-	515	3.8
Machine Mono Die Heads										
AH42047	500A	Mono	Q.O.	RH	Yes	Mono	1/8	-	*	3.1
AH42052	500A	Mono	Q.O.	RH	Yes	Mono	1/4	-	*	3.2
AH42057	500A	Mono	Q.O.	RH	Yes	Mono	3/8	-	*	3.2
AH42062	500A	Mono	Q.O.	RH	Yes	Mono	1/2	-	*	3.3
AH42067	500A	Mono	Q.O.	RH	Yes	Mono	3/4	-	*	3.3
AH42072	500A	Mono	Q.O.	RH	Yes	Mono	1	-	*	3.6
AH42077	500A	Mono	Q.O.	RH	Yes	Mono	1 1/4	-	*	3.6
AH42082	500A	Mono	Q.O.	RH	Yes	Mono	1 1/2	-	*	3.9
AH42087	500A	Mono	Q.O.	RH	Yes	Mono	2	-	*	3.9

* 500-500A-535-800-801-802-1822 Machines and 300 and 300-A w/ carriage.
 Q.O. = Quick-Opening - Manually flip throwout lever to retract dies when thread length is cut.
 S.O. = Self-Opening - Trigger foot automatically retracts dies when thread length is cut.
 No. 811A Die Head replaces the No. 811 and No. 841 Die Heads.
 No. 815A Die Head replaces the No. 815 and No. 845 Die Heads.
 No. 500A Die Head replaces the No. 500 Mono Die Heads.
 No. 555 Die Head replaces No. 515
 Note: British Die Heads use British Dies only
 Note: 531 and 532 Die Heads replace 500B Die Head

Individual Machine Die Heads do not include dies.



The new RIDGID 258XL increases pipe cutting capacity from 8" to 12". Utilizing the same displacement type cutter wheel technology, the patented design now enables larger diameter pipe to be cut to length. The 258XL also incorporates the RIDGID 700 Power Drive to rotate the general purpose cutter wheel. Now one person can easily cut 12" schedule 40 pipe in minutes.

New accessories expand 258 and 258XL applications. A thin wall pipe wheel has been developed to cut schedule 10 pipe, even stainless steel. The thinner profile wheel along with limited wheel pressure ensures a clean cut without deforming the outside diameter. With the addition of a transport cart that quickly attaches to either the 258 or 258XL, on-site mobility is improved.

Model 258

Standard Equipment

- 258 cutter with hydraulic ram
- Two speed foot pump and hose
- Pipe support with ball transfer head (two)
- General purpose cutter wheel for 2 1/2" - 8" Schedule 40 steel and galvanized pipe or rigid conduit
- Adapter for 700 Power Drive
- Net weight 110 lbs (50 kgs)

Accessories

- RIDGID No. 700 Power Drives
- 115V cr 230V, 25-50 Hz, UL listed
- 115V 25-60 Hz (CSA Approved)
- Additional pipe support with transfer heads
- Two wheeled transport cart.
- Cutter wheel for thin wall (Sch. 10) pipe.

Model 258XL

Standard Equipment

- 258XL cutter with hydraulic ram
- Two speed foot pump and hose
- Pipe support with ball transfer head (two)
- General purpose cutter wheel for 8"-12" Schedule 40 steel and galvanized pipe or rigid conduit
- Adapter for 700 Power Drive
- Net weight 145 lbs (66kgs)

Accessories

- RIDGID No. 700 Power Drives
- 115V or 230V, 25-50 Hz, UL listed
- 115V 25-60 Hz CSA Approved
- Additional pipe support with transfer heads
- Two wheeled transport cart.
- Cutter for thin wall pipe.

MODEL 258 / 258XL 8'-12" POWER PIPE CUTTER



Stock Code	Model No.	Description	Weight	
			lbs	kg
AH50767	258	2 1/2" - 8" Power Pipe Cutter	95	43
AH58227	258XL	8" - 12" Power Pipe Cutter	177	80

MODEL HC-450 HOLE CUTTING TOOL



The RIDGID HC-450 is designed to quickly and easily cut to 4 3/4" diameter holes in steel piping. This allows for use of Mechanical T's, Vic-Let™, and welded saddles. The RIDGID HC-450 mounts on pipe up to 8" diameter in either the vertical or horizontal position. A unique rotating vial ensures accurate set-up as well as repeated hole alignment. Two feed handles and dual safety switches allow for either left or right-hand operation.

Stock Code	Model No.	Description	Weight	
			lbs	kg
AH57592	HC-450	4 3/4" Hole Cutting Tool, 110V	42.0	19.0
AH57597	HC-450	4 3/4" Hole Cutting Tool, 220V	42.0	19.0



Features

- Cuts 1" through 4 3/4" holes in steel pipe
- Provides the horsepower and speed to maximize hole saw performance
- Allows left and right-hand operation
- Easily mounts to pipe
- Ensures repeated hole alignment

Specifications

- Chuck speed 110 rpm
- Hole capacity: 1" to 4 3/4"
- Drill chuck capacity: 1/8" to 5/8"
- Pipe clamping capacity: 1 1/4" to 8"
- 1, 2 HP 13 amp motor

Accessories

- All jobber drills and hole saws
- Integral arbor hole saws recommended For over 2" diameter (see table)

NO. 418 OILER

- Hand-operated, pumps easily by thumb action
- Completely portable, large pan catches oil run-off, chips
- Oil is double-filtered and recirculated through reservoir
- Chip pan 14 1/2" (362mm) dia, 8 1/2W" (212mm) deep, hose length 54" (1,4m)



Stock Code	Model No.	Description
AH10883	418	Oiler with 1 Gallon (3.78 Ltrs) of Thread Cutting Oil

4" ELECTRONIC DISC GRINDER G10BYEQ

Safety Comes First and Fast

HiKOKI's 5 Serious Safety Features

Paddle Switch

Stops the wheel when released. For even more safety, the paddle switch cannot be pulled unless the lock-off lever is pushed down, required.



Electronic Brake

Stops the wheel within seconds when the trigger is released, so users can get back to work quickly without wasting time waiting around for the wheel to slow down. The brake is also applied in case of unintentional disconnection of the power cord.



G13BYEQ (new model with brake) **Approx. 1.5 sec.** **Approx. 4.7 sec. Faster!**
G13SQ2 (existing model without brake) **Approx. 6.2 sec.**

Approx. 4x FASTER Stop

Kickback Protection System

Monitors a sudden drop in the motor rotation speed and stops the motor quickly to reduce the reaction force (kickback).

Zero Voltage Restart Protection

Prevents unintentional restart of the tool for accident avoidance.

Soft Start

Reduces the load felt by the user at start-up.



Stock Code	AC00766	
Model No.	G10BYEQ2	
Capacity	Wheel Dia.	100mm (4")
	Hole Dia.	16mm (5/8")
	Thickness	6mm (1/4")
Spindle Thread	M10 x 1.5	
Power Input	1,320W (230V)	
Max Power Input	1,900W (230V)	
No-Load Speed	10,000/min	
Overall Length	309mm	
Weight	1.9 kg	
Standard Accessories	Wheel Guard, Side Handle, Wrench	

1.6x Higher Grinding Performance

Actual performance may vary according to the workpiece material and other operating conditions.



Dust Filter (Fine Mesh)

Prevents dust particles from entering the motor housing.



RECIPROCATING SAW



RS-26
RECIPROCATING SAW 1/2"-6"

Stock Code	AC01229
Model No.	RS 26
Power input	1500W
Voltage	230V / 50Hz, 110V / 60Hz
No Load r.p.m	1000-2000
Chain clamp for pipe size	1/2" - 6"
Stroke	26mm (1")
Dimension (LxWxH)	491 x 94 x 108mm
Net Weight	4.35kg (10Lbs)

DIE GRINDER



DG - 50L
DIE GRINDER

Stock Code	AC01226	AC01227
Model No.	DG 50	DG 50L
Mode	High Speed	Low Speed
Power input	1200W	
Voltage	230V / 50Hz, 110V / 50Hz	
No Load r.p.m	10000-28000	2700-6000
Collet	6mm (Size 3mm, 1/4", 8mm Also Available)	
Max Wheel Diameter	50mm	
Dimension	410mm(L) x 72mm(W) x 77mm(H)	
Soft Start & Overload Protection	With	
Weight	4.35kg (10Lbs)	4.35kg (10Lbs)

DRY-CUT METAL SAW



DRC-355
(355MM) 14" DRY-CUT METAL SAW

Stock Code	AC01228			
Model No.	DRC 355			
Power Input	2200W			
Voltage	230V / 50Hz, 115V / 60Hz			
No Load r.p.m	1300			
Max Cutting Capacities Dimension	90 deg.	Round Pipe	132mm	
		Square Stock	120mm (W) X 120mm(H)	
		Rectangular Stock	180mm(W) X 100mm(H)	
		Right Hand Miter		
		Round Pipe	105mm	
		Square Stock	90mm(W) X 90mm(H)	
		Rectangular Stock	90mm(W) X 120MM(H)	
		Left Hand Miter		
		25 deg.		80mm(W) X 120mm(H)
		30 deg.		90mm(W) X 120mm(H) C-clamp required
	35 deg.		80mm(W) X 120mm(H) C-clamp required	
	40 deg.		70mm(W) X 120mm(H) C-clamp required	
Arbor	25.4mm			
Soft Start	With			
Dimension	608 X 360 X 580 mm			
Weight	23.5kg			