

Oxygen Monitor

Model OX-1 Applied by H.K. (Ship equipment inspection society)
Approved by N.K. register of shipping in Japan

Features

- Rugged and robust design
- Free from other gas interference
- 500 hrs measurement capability
- Hand-aspirated sampling
- Intrinsically safe (Made in Japan)



Specifications

Detection principle	Electrochemical cell
Measurable gas	Oxygen in air
Measuring range	OX-1C 0-25% OX-1D 0-25/0-100% OX-1E 0-25/0-50% OX-1F 0-25/0-10% OX-1G 0-25/0-5% OX-2 0-25/0-10%
Accuracy	Better than ± 0.75 in range of 0-5, 10, 25% (JIS T-8201 complied) Better than $\pm 5\%$ of F.S. in range of 0-50, 100%
Operating temp.	-10°C ~ +40°C
Batteries & operating hours	Ni-Cd battery 2.5V x 2 pcs pack, 500 hrs minimum
Dimensions & weight	170 (W) x 130 (H) x 85 (D)mm, Approx 2kgs

Oxygen Monitor

Model OX-82 Approved cert No. A-4477 (OX082 special) by DNV
(Det Norske Veritas) in Norway
Approved cert No. 419 by NK
(NK register of shipping) in Japan

Features

- 3 kind of alarms ① Gas alarms ② Over-scale alarm ③ Low battery alarm
- Self-automatic illumination in dark places
- Remote monitoring capability (5, 10, 20, 30m)
- External alarm buzzer capability
- Intrinsically safe (Made in Japan)



Specifications

Detection principle	Electrochemical cell
Measurable gas	Oxygen in air
Measuring range	0-25% Better than $\pm 0.7\%$ (JIS T8201 complied)
Alarm preset point	18%
Sampling method	Diffusion sampling
Operating temp.	-10°C ~ +40°C
Batteries & operating hours	Dry battery x 2 pcs, 100 hrs minimum by alkaline battery or Ni-Cd battery (option)
Dimensions & weight	78 (W) x 142 (H) x 26 (D)mm, Approx 300grs

Oxygen Monitor

Model OX-62B Applied by H.K. (Ship equipment inspection society)
Approved by N.K. register of shipping in Japan

Features

- Remote type oxygen monitoring
- Large size meter with illuminous part
- Shock-proof protective cover at sensor part
- Long life sensor applied
- Intrinsically safe (Made in Japan)

Specifications

Detection principle	Electrochemical cell
Measurable gas	Oxygen in air
Measuring range	0-25%
Accuracy	Better than $\pm 0.7\%$ (JIS T8201 complied)
Operating temp.	-10°C ~ +40°C
Batteries & operating hours	Dry battery x 2 pcs, 40 days minimum Alkaline battery x 2 pcs, 70 days minimum Ni-Cd battery x 2 pcs, 20 days minimum
Dimensions & weight	Indicator unit: 83(W) x 177(H) x 40(D)mm, Approx 0.5kg Sensor unit: 60 dia x 140mm, Approx 0.4kg (with 5m cord)



SCIENTIFIC INSTRUMENT

Extech EZ 30 EzFlex 16" (406mm) Flexible gooseneck /Thermo-Anemometer

Model GP-226 Applied by H.K. (Ship equipment inspection society)

Features

- Dual expanded scale with automatic suction
- Simple design with small size & light weight
- Large size analog meter
- Intrinsically safe (Made in Japan)



Specifications

Detection principle	Catalytic combustion
Measurable gas	GP-266: Combustible gas (iso-butane cal) in air
Measuring range	GP-266: 0-20/ 0-100% LEL (Change-over)
Sampling method	Internal pump suction
Accuracy	Better than $\pm 5\%$ of F.S
Alarm preset point	20% LEL
Operating temp.	-10°C ~ +40°C
Batteries & operating hours	Internal Ni-Cd battery, 4 hrs minimum
Dimensions & weight	150 (W) x 85 (H) x 125 (D)mm, GP-266: Approx 1.6kg

Model GP-204 Approved by Institute for Safety of High pressure gas engineering in Japan
Approved cert No. A4925 (GP-204) by DNV (Det Norske Veritas) in Norway

Features

- Robust design
- Simple design with small size & light weight
- Large size analog meter
- 3 kind of gas range scale



Specifications

Detection principle	Catalytic combustion
Measurable gas	Combustible gas (LPG, Gasoline & LEL scale) in air Methane (CH ₄) as option
Measuring range	LPG : 0-1.9% by vol Gasoline : 0-1.4% by vol Combustibles : 0-100% LEL
Batteries & operating hours	Dry battery x 2 pcs 7 hrs minimum
Dimensions & weight	136 (W) x 85 (H) x 102 (D)mm, Approx 1.7kg

EXTECH EZ40 EzFlex™ Combustible Gas Detector Quickly Identifies and Pinpoints Gas Leaks



Features:

- 16" (406mm) gooseneck for easy access into hard to reach location
- High Sensitivity
- One hand operation with thumb controlled sensitivity adjustments to eliminate background gas level
- Visible and audible alarm at 10% (LEL) lower Explosive Limity for methane.
- Locate the smallest leaks
- Complete with 3 "C" batteries.

LUTRON LIGHT METER LX-101A

Features:

- Sensor used the exclusive photo diode & multi-color correction filters, spectrum meet C. I. E. standard.
- Sensor COS correction factor meet standard.
- Separate LIGHT SENSOR allows user take measurements of an optimum position.
- Precise and easy readout, wide range.
- High accuracy in measuring
- Built-in low battery indicator.
- LSI-circuit use provides high reliability and durability.
- LCD display provides low power consumption.
- Compact, light-weight, and excellent operation.
- LCD display can clearly read out even of high ambient light.



REFRIGERANT LEAK DETECTOR CENTER 380



FEATURES

Refrigerant Leakage Detector is the perfect tool for maintaining the air-condition or a cooling system with compressor and Refrigerant. This unit used newly developed semi-conductor sensor which is extremely sensitive to variety of general used Refrigerant. Microprocessor Control with advanced Digital signal

SPECIFICATIONS

- Heated Semiconductor Gas Sensor.
- High-Low Leak Sensitivity Selector.
- 7 LED Tri-colored Visual Leak Level Indicator.
- Variable Intensity Audible Alarm.
- Ambient Concentration Reset.
- 15.5" (40CM) Flexible Stainless Probe.
- Detection of R-134a, R-404A, R-410A, R-407C, R-22, R-502, R-600A. Refrigerants Gas.
- Sensitivity As Small 6gr/year.
- Accordance With SAE J1627, CE Design.
- Low Battery Indication.
- Hard Carry case Included
- Operating Temperature: 0 to 40°C (32 to 104°F)
- Size: 21.7 x 6.6 x 5.6 cm
- Weight: 400g (with batteries)
- Power Source: 4AA size Alkaline Batteries
- Battery Life: Approx. 40 hrs.

MOISTURE METER LUTRON MS-7003

SPECIFICATIONS

- Applications: Designed to check the moisture level of wood, concrete and other non-woo material.
- Principal: Used the 2 pins electrode to measure the conductive ability of the species, then converter to reading of % "Moisture of Content"
- Circuit: Custom one-chip of microprocessor LSI circuit
- Display: LCD size: 51mm x 37mm
Digit size: 16mm (0.62")
- Material Range: Material 1: 0 to 100% relative moisture value for concrete and other non-wood material.
Material 2: 6% to 40% moisture range on wood
- Resolution: 0.1%
- Accuracy: $\pm(5\% + 5d)$ @23 $\pm 5^\circ\text{C}$
@Material 1: 13% to 100%
@Material 2: 6% to 40%
- Probe : 2 pins moisture electrode.
- Data Hold: By push button on front panel.
- Memory Recall: Records Maximum & Minimum reading value.
- Sampling Time: Approx. 0.8 second.
- Operating Temp. / Humidity: 0 to 50°C (32 to 122°F) Less than 80%RH.
- Power Supply: Alkaline 006P, MN1604(PP3) DC 9V battery
- Power Current: Approx. DC 16mA
- Weight: 251g/0.55Lb.
- Dimension: 216.5 x 68.5 x 29.7mm (8.4 x 2.7 x 1.2 inch)
- Accessories & included: Instruction Manual (1) Extra contact pins-(10 pcs)
- Optional Accessories: Separate Probe, MP-31, Hard carrying case, CA-06 Soft Carrying Case, CA-05A



KIMO Airflow meter DBM610



Accuracy Scale 5% of full scale
Range 0 to 1400 CFM
Instrument weight 6.5 pounds

- Measuring range: from 40 to 3500m³/h or from 24 to 2060 cfm
- Quick and simple hood changes
- Simultaneous display of airflow and temperature
- Automatic detection of airflow direction (supply and exhaust)
- Thermo-anemo-manometer functions

Scientific Instrument

LUTRON TM-9126 Type K/J/R/EIT

FEATURES

- Type J/K/R/E/T thermocouple thermometer.
- Temp. probe accept 5 different types : type K, type J, type R, type T, type E.
- Microcomputer circuit with excellent performance.
- Wide temperature measuring range.
- °C °F & select button.
- 0.1 degree resolution for type K/J/T/E.
- Data hold.
- Memory function to record the maximum & minimum reading.
- REL button for relative measurement.
- Sensor select button on the front panel, easy to change different type probe.
- RS 232 data output.
- Optional data acquisition software for data record.
- Auto power off saves battery life.
- Heavy duty & compact housing.

Optional: 1. Temperature probe is optional
2. Data acquisition software for data record



GENERAL SPECIFICATIONS

Display	51 mm x 32 mm supper large LCD display,
	15 mm (0.6") digit size.
Sensor	Thermocouple probe
Type	@ Thermocouple type K
	@ Thermocouple type J
	@ Thermocouple type T
	@ Thermocouple type E
	@ Thermocouple type R
Functions	°C, °F, Data hold, Memory (Max., Min.),
	Relative measurement,
Resolution	0.1 degree or 1 degree.
Circuit	Exclusive microcomputer circuit, the software build in linearity correction
	function instead of the traditional hardware circuit.
Probe Input	Thermocouple probe :
Socket	Standard 2 pin thermocouple socket.
Sampling Time	Approx. 1 second.
Hold Function	To freeze the display reading value.
Memory Recall	Memorize the Maximum, Minimum reading.
Offset	Available for thermocouple thermometer,
Adjustment	adjustment by pushing button on front panel.
Over Indication	Show "----".
Data Output	RS232 PC serial interface.
Power Supply	DC 1.5 V battery (UM4, AAA) x 6 PCs, or equivalent.
Size	174 x 68 x 42 mm (6.9 x 2.7 x 1.7 inch).
Weight	280 g/0.62 LB.
(Refer to page 13)	*RS232 cable, UPCE-02
	*USB cable, USB-01
	*Data Acquisition software,
	*SW-801-WIN

HUMIDITY/ TEMPERATURE DATALOGGER

Model: MHT-381SD

Description:

Recorder with real time data recorder, save the measuring data along the time information (year, month,date,minute,second) into the SD memory card and can be download to the Excel, extra software is no need.

- Humidity: 10 to 90% RH
- Temperature: 0 to 50.0 ° oC/oF.
- Show humidity and temperature value in the same LCD.
- Large LCD display, easy readout.
- Low power consumption and long battery life when use battery power.
- DC 1.5V (UM-4,AAA) battery x 6 pcs or DC 9V adapter in.
- RS232/USB compter interface.
- Size: 132 x 80 x 32 mm
- Patented
- Patent: Taiwan,China, Japan, Germany,USA pending



Time Brand Ultrasonic Thickness Gauge

Model: TT100

FEATURES

- Portable size and easy operation
- Suitable for any metallic and non-metallic materials ultrasonic can go through
- Self-compensating of nonlinearity function is supplied for correction of pickup nonlinearity
- 10 measuring values recorded
- optional 2.5MHz, 5MHz and 7MHz transducers are available
- Clear 4-Digit LCD display with backlight
- 5 pre-set sound velocities for repeating applications
- mm / inch selectable
- TT100 suitable for thickness testing of various materials with sound speed range 1000-9999m/s



Waterproof Digital Thermometer,SK-250WP11-N, Sato

Both main unit and probes are waterproof construction conforming to IP-X6 rated (*1) - protected against strong jets of water - limited ingress permitted.

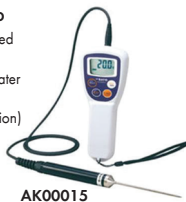
They will not be affected in function at the touch of wet hands or with splash water

Measured value can be held. (HOLD function)

Power will automatically turn off after 60 minutes (AUTO-POWER OFF function)

Low battery mark protects the power insufficient

(*1): IP X6 Waterproof Properties .Level 6: Protected against strong jets of water - limited ingress permitted



Model	SK-250WP11 Series Waterproof Digital Thermometers
Display range	-55°C to 305°C
Measuring range	-50°C to 250°C (Measuring range is different depending on the probe connected)
Probes connected	SK-SWP11 series probes (Thermistor)
Accuracy (body)	±(0.1°C + 1 digit) at -9.9 to 199.9°C ±(1°C + 1 digit) at other than above
Waterproof properties	conforming to JIS C 0920 Protection class 6 (equivalent to IP X6)
Operation ambient	0 to 50°C
Display sampling	about 1 sec.
Power requirements	3VDC ("AAA" (LR03) size battery x 2)
Battery life	about 1000 hours continuous (by using alkaline batteries)
Dimensions	71 (W) x 170 (H) x 36 (D) mm
Weight (body)	approx. 0.145 kg (inclusive batteries)
Materials	ABS resin
Standard accessories	SWP11-01M probe with test result, hand strap, vinyl cover, "AAA" size battery x 2

DIGITAL NON-CONTACT INFRARED THERMOMETER

Be 300e

Features

- Wire Temperature range: -50~+420°C or 788 °F.
- High accuracy of ±1.5% or ±1.5°C whichever is greater.
- Distance spot Ratio of 12:1
- °C/°F Selection
- Auto Data Hold
- Laser Target Pointer ON/OFF selection
- Backlight ON/OFF selection
- Auto power off if idle or no operation in 7 sec.
- Large LCD Screen w/easy to read instant Real-time temperature
- Quick and highly accurate response
- Ergonomically shaped hand grip.
- With CE marking meets EU safety , health and environmental requirements.

Specification:

- Temperature range: -50~+420°C, -58~788 °F
- Accuracy: ±1.5% or ±1.5°C Whichever is greater
- Repeatability ±0.1°C
- Distance Spot Ratio:12:1
- Emissivity:0.10-1.00 Adjustable
- Laser Power: < 1 mW
- Resolution: 0.1 °C/°F
- Response Time: 500ms
- Wavelength: 8-14µm



ALLINTON ENGINEERING & TRADING PTE LTD

331 Jalan Besar Singapore 208983

T65 6296 0679 W allinton.com.sg E sales@allinton.com.sg

Scientific Instrument

ELECTRONIC THERMOMETER

with Stainless Steel Probe for High-Temp Sensing

Model: AZ-668SHR

- Dual temperature sampling cycle
- Full range programmable temperature alarm
- Provide max/min temperature recorded

Features:

- LCD digital thermometer with wide range high/low temperature alarm
- Display and record maximum and minimum temperatures memories
- °C or °F (user selectable)
- Low battery indication
- Table or wall mount
- Uses 1 Pz. UM-4 or "AAA" size 1.5V battery

Range:

- Operating temperature 0°C to +50°C (+32°F to +122°F)
- Measuring range (probe): -50°C to 260°C (-58°F to +500°F)

AK00017



Digital Pocket Thermometer (70mm probe length)

Model: AI368

Features

- Water resistant
- Battery Saver (Auto off)
- Protective Sleeve for Hygienic care
- Max/Min Selection
- Hold function

Applications

Food & Beverage Test, Refrigeration, frozen food & Storage Pharmaceutical, Laboratories.

SPECIFICATIONS

Temperature range: -40°C to +203°C (-40°F to 392°F)

Operatin Temperature: -20°C to 50°C (-4°F to 122°F)

Precision: +/-1°C (+/-1.8°F) from -20°C to +100°C (-4°F to 212°F), +/-2°C (+/-3.6°F) otherwise

Resolution: 0.1°C (0.1°F)

Battery: 1.5V button cell

Probe Type: Stainless Steel Probe



AK00019

Lutron Brand Humidity Meter

Model: HT-305

FEATURES

- Humidity + Temperature + Dew point are combined into one meter, intelligent and professional.
- 0.1 %RH resolution for the humidity reading, 0.1 degree resolution for the Temp. reading.
- Pocket size with Separate humidity & temp. probe, easy operation. & remote measurement.
- Fast humidity measuring response time.
- High accuracy and high precision.
- Dew point measurement.
- Just few panel buttons, easy operation.
- Microprocessor circuit assures maximum possible accuracy, provides special functions and features.
- LCD with two display, easy readout.
- Heavy duty & compact housing case, designed for easy carry out & operation.
- Records Maximum and Minimum readings with Recall.
- Auto shut off saves battery life.
- Data hold function for freezing the desired value on display.
- Show the humidity & temperature values on the LCD display at same time.
- Built-in low battery indicator.
- Wide humidity & temp. measuring range.
- DC 9V power adapter input socket.



AK00021



Lutron Brand Humidity/ Temperature Monitor

- The data is directly transferred to computer via USB cable, the daticing station is not required.
- Water Resistant IP 65.
- Hi-Low set-up alarm.
- USB interface far set-up and data download.
- Fast USB download speed-download 50K records in less than 10 seconds.

Model: MHF 381SD

- Sensor : Internal.
- Type : Temperature / Humidity.
- Channel(s) : 2.
- Range : -40°C to +85.0°C/-40°F to +185.0°F
- Accuracy : ±0.8°C/±1.5°F
- Range : 0-100% RH.
- Accuracy : ±0.6°C(1.2°F) from -20 to 50°C(-4 to 122°F) ±1.0°C(1.8°F) all other rangers.
- Interface : USB.
- Datalogger Memory : 50,000 records.
- Dimension : 61X 47 X15mm.

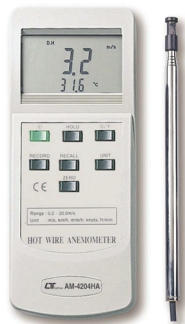


AK00023

LUTRON HOT WIRE ANEMOMETER AM-4204HA

FEATURES

- Thermal anemometer, available for very low air velocity measurement.
- Slim probe, ideal for grilles and diffusers.
- Combination of hot wire and standard thermistor, deliver rapid and precise measurements even at low air velocity.
- Heavy duty & compact housing case.
- Records Maximum and Minimum readings with recall.
- Data hold.
- Multi-functions for air flow measurement : m/s, km/h, ft/min, knots, mile/h.
- Build in temperature °C, °F measurement.
- Thermistor sensor for Temp. measurement, fast response time.
- Deluxe hard carrying case.



AK00025

No. 7683-00 Hot Wire Anemometer

SPECIFICATIONS

Measurement object : Clean air at normal pressure and humidity
Measuring range : Air velocity : 0.5 to 3 m/sec., 3 to 40 m/sec. (dual range)
Air temperature : 0 to 60°C, 60 to 120°C (dual range)
Static pressure : 0 to 500 Pa, 500 to 4500 Pa (dual range)
Accuracy : Air velocity : $\pm 5\%$ F.S. ± 0.1 m/s. (at 18 to 28°C)
Air temperature : $\pm 0.5^\circ\text{C}$
Static pressure : $\pm 2\%$ F.S. (over 10 Pa)
Temperature compensation : 0 to 120°C
Ambien conditions for body : +5 to 45°C, below 80%RH
Size Probe : $\varnothing 11$ to $\varnothing 18.7 \times 200$ to 690 (L) mm
Cord : $\varnothing 6$ mm $\times 3$ m (L)
Instrument : 220 (W) \times 175 (H) \times 135 (D) mm
Weight : Approx. 2 kg (exclusive of batteries)
Power requirements : 9 VDC (six "C" alkali batteries)
Standard accessories : Carrying case, six "C" batteries, test result



AK00026

Elcometer 456 Coating Thickness Gauge

With its recently enhanced and simplified menu screen options, the Elcometer 456 remains the most advanced hand held coating thickness gauge on the market today.

This flagship product is available in any combination of Basic, Standard, and Top functionality; together with Integral (built in) and an extensive range of separate plug in probes.

With such an extensive range of gauge options, there is an Elcometer 456 to meet your specific application needs.

In this section the Elcometer 456 Range is explained as follows:

- Gauge Features
- Integral Gauges and Options
- Separate Gauges
- Range of Separate Probe Options
- Standard
- Miniature
- Plug in Probes (PINIP™)



AK00027

UtiliTrac R 120 Pipe and Cable Locator

The UtiliTrac sets new standards in locating underground pipes and cables. Its ergonomic design and intuitive trigger controlled functions ensure comfortable and effortless work even when used over the full working day. The UtiliTrac folds and is carried in the signal generator's case and, weighing only 7 kg, can easily be transported by hand or is compactly stowed in your vehicle.

The receiver

The display

The compass display shows the user the orientation and location of the service being traced and is not dependant on the locator's orientation i.e. it works in any direction. Depth to the service and signal strength is shown allowing you to see if you are still tracing the correct service or if perhaps the signal has jumped.

Operation

Single trigger operation provides the user with intuitive and simple service being traced and is not dependant on the locator's orientation i.e. it works in any direction. Depth to the service and signal strength is shown allowing you to see if you are still tracing the correct service or if perhaps the signal has jumped.



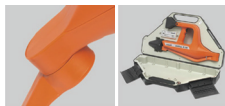
Compact design

The UtiliTrac is the first folding receiver which can be perfectly stowed in the compact generator case.



The aerial

The new aerial technology allows the UtiliTrac to clearly indicate pipelines and sondes in the screen display.



Design Meets Functionality



AK00028

The G100 signal generator



The carrying case

The compact design and the patented aerial construction make the 10 W transmitter G 100 the perfect partner for the receiver. The aerial construction provides above-average inductive coupling strength, allowing a greater distance between the transmitter and the receiver.

The control unit

Both the frequency and the current can be adjusted clearly and quickly using the arrow keys. The user can also select an energy-saving pulsed output.

The battery display

A long life lithium ion rechargeable battery provides operating time of up to 36 hours. The battery status is indicated by LEDs.

Capacitive coupling

The G 100 offers the user two signal outputs for the "simultaneous tracing of two different, parallel services with different frequencies. As soon as two cable sets are connected to the G 100, the operator can adjust them individually to the control unit.

RD400SL Buried pipe and cable locator



AK00029

A simple easy-to-use locator for utility distribution technicians, contractors and anyone needing to know the position and depth of buried pipes and cables. The locator locates and identifies target lines and locates other nearby pipes and cables that need to be avoided when digging.

Radiodetection's design introduces important new features:

- Accurate and easy pinpointing with enhanced meter response.
- Improved signal filtering banishes unwanted interference.
- Automatic depth measurement. Automatic function and calibration verification.
- Super sensitive power locate mode. (Exceeds NJUG guidelines).
- Ergonomic shape for day long use.
- Simple to use. Only three controls on the receiver transmitter combination.
- Locator versatility provides accurate locate in complex situations.
- Choice of signal frequencies: the locator is available with 8kHz or 33kHz locate mode.

Plus Radiodetection's proved and classic features:

- 3 location modes: Power and Power + for locating buried power cables and other nearby lines. Radio for locating lines not radiating a power signal. Transmitter for tracing, identifying and pinpointing.
 - Twin aerial antenna for super sharp response and directionally.
 - Rugged weatherproof construction (IP54) for everyday site use in all climates.
 - Very comprehensive instruction manual suitable for the novice and the experienced user.
- Optional accessory equipment:**
- Receiver meter illumination for night work.
 - Receiver accessory module for clamp and stethoscope antennas for cable identification.
 - High power 3W transmitter for long distance tracing.
 - Wide range of accessories for applying the transmitter signal to pipes and cables.
 - Large selection of transmitting sondes enable the receiver to trace drains, ducts and non metallic pipes.

Comprehensive information available:

- RD400SL Locator technical information and specification.
- Accessories for the RD400SL receiver and transmitter.
- Transmitting sondes and accessories for tracing drains.

Model SKR-180P Electronic Auto-Balancing Recorder



SKR-180P-2-10
AK00030

SKR-180P-6-10
AK00031

FEATURES:

1. Direct reading is easy due to the reading scale provided for each parameter.
2. Storage of data is easy since Z fold chart are used.
3. Change of charts or replacement ink is easy because of DIN and revolving locker system.
4. No trouble of blotting of ink etc. due to fibre top pens.
5. Highly reliable recorders excellent in accuracy, stability, and durability.

Specifications:

Model name Catalog No.	SKR-180P-2-10 7982-02	SKR-180P-6-10 7982-06
Input signal	0-10mV DC	0-10mV DC
Recording system	2 pen type (simultaneous record)	Color coded 6 dotting Type (12 dotting type)
Response time	2.5 sec at 50Hz 2.1 sec at 60Hz	2.5 sec at 50Hz 2.1 sec at 60Hz
Dotting interval	-	6 sec at 50Hz 5 sec at 60Hz
Chart Paper	z hold type, 20m	z hold type, 20m
Effective width of chart paper	1st pen 85mm 2nd pen 85mm	180mm
Chart forwarding chart	25-50mm/h	25-50mm/h
Power to forward chart	AC motor	AC motor
Continuous recording period	1 month	1 month
Operating Temperature range	-10 to 50°C	-10 to 50°C
Power requirements	100V or 110V AC $\pm 10\%$ 50/60Hz	100V or 110V AC $\pm 10\%$ 50/60Hz
Power consumption	Approx. 18 V A	Approx. 15 V A
Outer dimensions	288 x 288 x 355mm	288 x 288 x 355mm
Weight	Approx. 16kg	Approx. 15kg

No. 7932-2 Digital Rain Gauge

Specifications of Sensor

Type of sensor:	Tipping bucket type rainfall sensor
Output:	1 contact point pulse per 0.5mm of rainfall (non voltage)
Contact point capacity:	Max. working current: 1 ADC Max. working voltage: 250 VDC
Contact point time:	More than 0.1 second
Dia. of rain collection:	Ø200mm
Outline dimensions:	Ø200 x 450 (H) mm
Weight:	Approx. 3.5kgs

Specification of Indicator

Measuring range:	Digital display: 0 to 1000mm (repeat) 4 digits, 0.5mm step
Alarm: Time setting:	Digital switch for rainfall time 2 digits, 1 to 99minutes (selectable)
Alarm setting:	Digital switch for integrated rainfall depth, 3 digits, 1 to 999mm (selectable)
Alarm output:	Relay contact output (normal open) Contact point capacity: AC 110V, DC24V 3A
Alarm switch:	ON/ OFF switch for alarm
Buzzer switch:	ON/ OFF switch for buzzer
Reset:	Reset the data of digital display by reset switch
Integration/ Time:	Selectable by switch
Electric contact output:	Non-voltage make contact
Back up power supply:	7 hours by build-in battery
Combined accuracy:	Below 20mm of rainfall: Within ± 0.5 mm Over 20mm of rainfall: Within $\pm 0.3\%$ of indicated value



AK00032

Outer dimensions:	206 (W) x 106 (H) x 305 (D) mm
Weight:	Approx. 4 kg
Panel cut size:	204 (W) x 104 (H) mm
Power requirement:	AC100V $\pm 10\%$ 50/ 60Hz (other voltage is available)
Power consumption:	AC100V : Below 200mA
Operating temperature:	-10 to 50°C
Storing temperature:	-20 to 70°C
Relative humidity:	20 to 90% RH (no-condensing)
Ambient:	Atmosphere of about 1013 hPa including non corrosive gases.

ALLINTON ENGINEERING & TRADING PTE LTD

331 Jalan Besar Singapore 208983

T65 6296 0679 W allinton.com.sg E sales@allinton.com.sg

Isuzu Quartz-type Precision Thermo-Hygrograph

Quartz-type precision thermo-hygrograph is housed as a single compact unit, and it is designed to conduct long-term (1 day, 7 days, 31 days, 62 days, 93 days, 183 days, 365 days) observation for temperature and humidity.

The duration of the recording period can be freely selected for virtually any duration by simply setting the dial switch located on the upper part of the cylindrical drum. This means that with just a single unit of this electronic thermo-hygrograph you have the built-in flexibility that can respond to the need for either short-term data gathering or for long-term, unattended observation in unmanned regions.

Features

- Can be easily mounted or hung on the wall
- The carrying-handle for ease of portability
- Easily detachable housing simply slides out
- Removal of the drum is simplicity itself
- Attaching recording graph paper is simply and easy

SPECIFICATIONS

Model:	TH27R
Temperature:	-20 to 50 °C
Accuracy:	+/-1 °C
Humidity:	0 to 100% RH
Accuracy:	+/-3% RH
Rotation [Days]:	1,7,31,62,93,183,365 days
Minimum graduation:	1 °C (Temperature)
Minimum graduation:	1% RH (Humidity)
Dimension:	361 (W) x 150 (D) x 287 (H) mm
Weight:	3.0kg



AK00033

No. 26-SP Cup Type Anemometer with Alarm

SPECIFICATIONS

Transmitting Unit

Type	Pulse type cup anemometer
Wind speed resistance	50m/s
Output	Two-wire system (nonpolar), superimposed on power cable
Cable extension	Max. 1.7Ω (approx. 30km for 0.9mm dia. wire)

Indicator

Measurement range	1 to 40m/s
Accuracy	10m/s or less: Within +0.5m/s Most than 10m/s: Within + 5%
Wind speed display	Can be switched between instantaneous wind speed and average wind speed
Alarm setting 1	Can be set to any value between 1 and 30m/s through the front panel
Alarm setting 2	Internally fixed at user-specified value (option)
Alarm release setting	Internally fixed at user-specified value (option)
Alarm contact rating	250 VAC, 30 VDC, 5A (resistive load)
Alarm contact type	Transfer contact
Alarm buzzer	Built-in
Power source	11 to 35 VDC (option: 100VAC)
Power consumption	Approx. 1W

Accessories

1. Cable (attached to transmitting unit) 20m
2. Indicator bracket (stand) 1 pair
3. 0.5-A mini fuse 3 pcs

Note: Since the transmitting unit of the anemometer outputs power superimposed signals, the transmitting unit cannot be as a stand-alone.

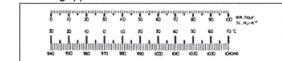
SCALE:

- Pen type



Rainfall, Rainfall intensity, Humidity
Solar radiation, Temperature
Barometric pressure

- Dotting type



AK00035

Davis Weather Station

Model: 6250



AK00036

Specifications

Davis Vantage Vue weather stations provide accurate, reliable weather monitoring in a self-contained, easy-to-install system, giving you all the weather data you need.

The sleek but tough outdoor sensor suite sets up in minutes and starts sending data wirelessly to your console anywhere in your home or shack.

Shows current weather conditions, including indoor and outdoor temperature and humidity, barometric pressure, wind speed and direction, dew point and rainfall. You'll also get weather forecast icons, moon phase, sunrise/sunset times, graphing of weather trends, alarms and more.

The Weather Centre button displays additional data on weather variables for today and over the last 25 days. The fully-integrated, corrosion-proof sensor suite is built to take all the weather your location can give whilst the smaller profile sensor suite is designed to minimize visual impact in your garden or on your roof. The sensor suite transmits data wirelessly up to 1,000 feet (300 m).

10 Channel Midi Logger

Model: GL220



AK00034

Item	Description
Number of analog input channels	10 ch
External input/output	Input *1 Trigger or Sampling input 1 ch, Logic or Pulse input 4 ch Output *1 Alarm output 4 ch
Sampling interval	10 ms to 1 h (in 10ms to 50ms, voltage only and limited channel), External
Time scale	1 sec to 24 hour /division
Trigger function	Action Start or stop capturing data by the trigger Source Start: Off, Input signal, Alarm, External *1, Clock, Week or Time Stop: Off, Input signal, Alarm, External *1, Clock, Week or Time Combination OR or AND condition at the level of signal or edge of signal Condition Analog: Rising, Falling, Window-in, Window-out Pulse: Rising, Falling, Window-in, Window-out Logic: Rising or Falling
Alarm function	Detecting method Level or edge of signal Condition Analog: Rising, Falling, Window-in, Window-out Pulse: Rising, Falling, Window-in, Window-out Logic: Rising, Falling Alarm output *1 4 channels, Output type: Open collector (pull-up resistor 10 kΩ)
Pulse input function *1	Accumulating count mode Accumulating the number of pulses from the start of measurement Range: 50, 500, 5 k, 50 k, 500 k, 5 M, 50 M, 500 M counts/F.S. Instant count mode Counting the number of pulses per sampling interval Range: 50, 500, 5 k, 50 k, 500 k, 5 M, 50 M, 500 M counts/F.S. Rotation count (RPM) mode Counting the number of pulses per second and then it is converted to RPM Range: 50 rpm, 500 rpm, 5 k rpm, 50 k rpm, 500 k rpm, 5 Mrpm, 50 Mrpm, 500 Mrpm/F.S. Max. input pulse rate 50 k pulses/sec or 50k counts per sampling interval, 16 bits counter is used
Calculation function	Between channels Addition, Subtraction, Multiplication and Division for analog input Statistical Select two calculations from Average, Peak, Max., Min., RMS
Search function	Search for analog signal levels, values of logic or pulse or alarm point in captured data
Interface to PC	USB (Full speed)
Storage device	Built-in Flash memory (2 giga-bytes), USB memory device *2
Data saving function	Captured data Direct saving of data into built-in Flash memory or USB memory device Others Setting conditions, Screen copy
Ring capturing mode	Function: ON/OFF, Number of capturing point: 1,000 to 2,000,000 (Size of the capture data will be limited to 1/3 of available memory)
USB memory device emulation	USB Memory emulation mode (Transfer or delete the file in built-in memory)
Engineering scale function	Set based on the reference point of the scaled output and input signal for each channel (Voltage measurement: four points are necessary to scale the output, Temperature measurement: two points are necessary to scale the output).
Display	Size 4.3 inch TFT color LCD (WQVGA: 480 x 272 dots) Formats Waveform + Digital, Waveform only, Calculation + Digital, Expanded digital
Operating environment	0 to 45 °C, 5 to 85 %RH (When operating with battery pack 0 to 40 °C, charging battery 15 to 35 °C)
Power source	AC adapter (100 to 240 V, 50/60 Hz), DC power (8.5 to 24 V DC, max. 26.4 V) *3, Battery pack *3
Power consumption	29 VA or lower (when operating with AC adapter, displaying LCD)
External dimensions (W×D×H)	approx. 7.63in x 4.63in x 1.65in
Weight	approx. 520 g (Excluding AC adapter and battery pack)

No. 7215-00 Sigma II Thermohygraph



AK00037

Specifications

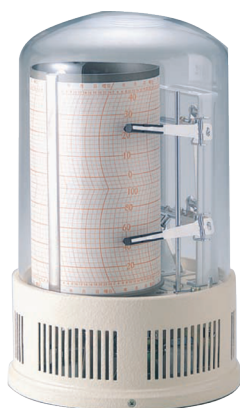
Cat. No: No. 7215-00 (Spring-wound type)
Model: NSII-Q (Quartz type), NSII-S (Spring wound type)
Clock: Quartz clock: 1-day, 7-days and 32-days by change over switch
Battery: 2 pcs of UM-2 (1.5V)
Life of battery: 1 year for continuous use
Spring-wound: 1-day and day by change gear
Sensors: Aged bimetallic strip for temperature
Human hair bundle for relative humidity
Measuring range: -15 to 40°C (option: 10 to 50°C) for temperature 0 to 100% for relative humidity
Accuracy: ±1°C for temperature ±3% for relative humidity
Chart graduation: 1°C for temperature 1% R.H. for relative humidity
Recording pens: Cartridge pens (violet)

Dimensions: 336 (W) x 148 (D) x 295 (H) mm
Weight: Approx. 3.1kg (Quartz type)
Accessories: 7-days chart for 1 year use (55 sheets/ pad)
Instruction manual, "C" cell x 2 pcs (Applicable to quartz type only)

Accessories Consumables:

No. 7210-60: 1-day chart (400 sheets/ pad)
No. 7210-62: 7-day chart (55 sheets/ pad)
No. 7210-64: 32-day chart (55 sheets/ pad)
No. 7210-90: Spare cartridge pen (Violet)
No. 7210-92: Spare cartridge pen (Red)
No. 7210-20: Axial AC fan

7005-00 "MINI-STAR" THERMOHYGROGRAPH (QUARTZ)



AK00039

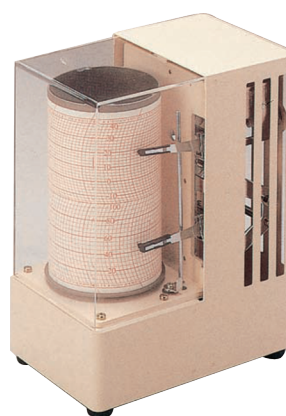
SPECIFICATIONS

Sensors: Aged bimetallic strip for temperature
Human hair bundle for relative humidity
Measuring range: -6 to +40°C
5 to 100% R.H.
Accuracy: ±2°C for temperature
±5% for R.H.
Chart graduation: 2°C for temperature
5% for R.H.
Clock: Quartz type
Drum rotation: 7 day
Power: "AA" size battery x 1
Recording pens: Cartridge-pens (violet)
Dimensions: 192 mm(H) x 125 mm (W) x 125 mm(D)
Weight: Approx. 1.5 kg
Accessories: 7 day chart for one year use (55 sheets/pad)
"AA" size battery x 1

Consumable

7005-62 Spare 7 day chart (55 sheets/pad)
7005-90 Spare cartridge-pen (violet)
7005-92 Spare cartridge-pen (red)

7008-00 "MINI-CUBE" THERMOHYGROGRAPH (QUARTZ)



AK00040

SPECIFICATIONS

Sensors: Aged bimetallic strip for temperature
Human hair bundle for relative humidity
Measuring range: -15 to +40°C for temperature
5 to 100% for R.H.
Accuracy: ±2°C for temperature
±5% for R.H.
Chart graduation: 2°C for temperature
5% for R.H.
Clock: Quartz type
Drum rotation: 7 day
Power: "AA" size battery x 1
Recording pens: Cartridge-pens (violet)
Dimensions: 190 mm(H) x 148 mm (W) x 97 mm(D)
Weight: Approx. 1.6 kg
Accessories: 7 day chart for one year use (55 sheets/pad)
"AA" size battery x 1

Consumable

7008-62 Spare 7 day chart (55 sheets/pad)
7008-90 Spare cartridge-pen (violet)
7008-92 Spare cartridge-pen (red)

Remote-Sensing Dial Thermometer



SB-100S AK00046
SB-150S AK00047

Model: SB-100S / SB-150S Dial Thermometer
(Mall Mounted Black Connection)

SPECIFICATIONS:

Case: SUS 304 High Polished
Window: Glass
Dial: White background with black markings
Capillary: SUS 304 armour over copper capillary
Bulb: SUS 304
Case diameter: 110mm (100mm) & 154mm (150mm)
Temp. range: -40 + 50°C/F
0 + 120°C/F
0 + 160°C/F
0 + 200°C/F
0 + 300°C/F
0 + 400°C/F
0 + 650°C/F

Order specifications required:

A. Case diameter
B. Range
C. Capillary Length
D. Stem Length & Stem Diameter
E. Connections size
* Special size available upon requests.



PN-100S AK00048
PN-150S AK00049

Model: PN-100S / PN-150S Dial Thermometer
(Mall Mounted Black Connection)

SPECIFICATIONS:

Case: SUS 304 High Polished
Window: Glass
Dial: White background with black markings
Capillary: SUS 304 armour over copper capillary
Bulb: SUS 304
Case diameter: 110mm (100mm) & 175mm (170mm)
Temp. range: -40 + 50°C/F
0 + 120°C/F
0 + 160°C/F
0 + 200°C/F
0 + 300°C/F
0 + 400°C/F
0 + 650°C/F

Order specifications required:

A. Case diameter
B. Range
C. Capillary Length
D. Stem Length & Stem Diameter
E. Connections size
* Special size available upon requests.

Oil Filled Dial Thermometer



AK00018

Model: SO-100S
Rigid Stem Type Dial Thermometer
(Oil Filled for Vibration Proof and Water Proof Type)
SPECIFICATIONS:
Case: SUS 304 High Polished
Window: Glass
Dial: White background with black markings
Bulb: SUS 304
Case diameter: 110mm (100mm)
Temp. range: + 50 + 650 °C/F

Order specifications required:
A. Temperature range
B. Stem length & stem diameter
C. Connections size

*Special size available upon requests.

Dial Thermometer



BM-100SE AK00050
ST-100SE AK00051

Model: BM-100SE / ST-100SE
Dial Thermometer Electric Contact Type
(High / Low)
SPECIFICATIONS:
Case: SUS 304 High Polished
Window: Acryl resin
Bulb: SUS 304
Contact capacity: AC100/200v-0.3A
Case diameter: 110mm (100mm)
Temp. range: - 40 + 50 °C till 0 + 650 °C

Order specifications required:
A. Temperature range
B. Stem length & stem diameter
C. Connections size

*Special size available upon requests.

BI-Metal Thermometer



AK00052

Model: BM-60S, 70S & 90S
BI-Metal Thermometer
(Bottom Connection)
SPECIFICATIONS:
Indoor / Outdoor use
Case: SUS 304 / Brass Chrome
Window: Glass
Bulb: SUS 304 / 304 / Brass Chrome
Case diameter: 64mm (60mm)
80mm (70mm)
101mm (90mm)
Temp. range: -40 + 60 °C/F till 0 + 550 °C/F

Order specifications required:
A. Temperature range
B. Stem length & stem diameter
C. Connections size

*Special size available upon requests.

BI-Metal Thermometer Adjustable Angle



AK00053

Model: SA70S & 90S
BI-Metal Thermometer Tilting Type
(High / Low)
SPECIFICATIONS:
Indoor / Outdoor use
Case: SUS 304
Window: Glass
Bulb: SUS 304
Case diameter: 101mm (90mm)
80mm (70mm)
Temp. range: - 40 + 60 °C/F till 0 + 550 °C/F

Order specifications required:
A. Temperature range
B. Stem length & stem diameter
C. Connections size

*Special size available upon requests.

BI-Metal Thermometer



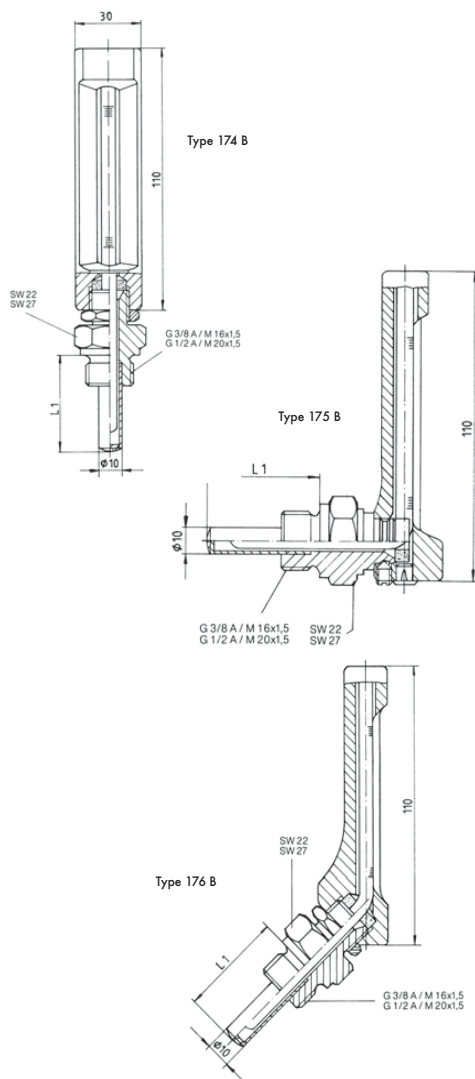
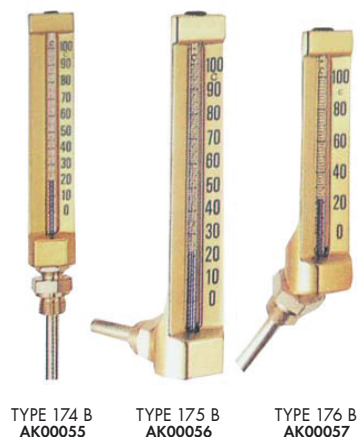
AK00054

Model: SK-40S, 60S, 70S & 90S
BI-Metal Thermometer (Black Conn.)
SPECIFICATIONS:
Indoor / Outdoor use
Case: SUS 304
Window: Glass
Bulb: SUS 304
Case diameter: 45mm (42mm)
64mm (60mm)
80mm (70mm)
101mm (90mm)
Temp. Range: -40 + 60 °C/F till 0 + 550 °C/F

Order specifications required:
A. Temperature range
B. Stem length & stem diameter
C. Connections size

*Special size available upon requests.

V-Line Thermometer



Castings

Aluminium, V-shaped, completely polished, gold-coloured anodized (or silver coloured upon request). Numerals of reading scale printed on the right side. Printing black-coloured for easy readability. Adjustable to any desired viewing position and locked by brass nut, spanner size 22mm. Angle thermometers (90°) have a grooved adapter piece with set screw. Advantage: When mounting the thermometer, it is not necessary to turn the casting.

Glass Inserts (Capillaries)

Capillary tube of solid glass, bar-shaped, prismatic (optic enlargement of the column), diameter approx. 6mm, oval opening, with yellow background for mercury and white background for blue fluid column. Calibration is deeply burnt, in black, thus being absolutely resistant. The main graduations, which correspond with the printing on the casing, are especially clearly outlined.

Capillary Fluid

For standard executions from -60° to +200°C, blue fluid and red fluid, respectively, for -60°C (code "F"). For temperatures of more than +200°C, only mercury columns (code "Hg") are possible. Upon request, thermometers can be delivered with mercury filling from -30°C onwards.

Immersion Tubes (Pockets)

As a standard, manufactured of brass (code "Ms") for temperature up to 300°C, for temperatures of more than 300°C made of steel (code "St"). Seawater resistant alloys are available upon request (special alloy "Ms 76" or CuNi30Fe"). For corrosive alkalis or acids, material 1.4571 (stainless steel) or other resistant kinds of steel are available. With immersion tube type "B", diameter is 10mm, thickness 1mm.

Accuracy

About 1% of maximum scale value, for thermometers with mercury column. The accuracy of thermometers with an alcoholic fluid meets DIN 16195 requirements and, consequently, corresponds with the requirements for local reading thermometers.

Order Example	174	2	35	1	1	030	2	1	1
Thermometer executive	Type								
Straight	174								
angle 90° C backwards	175								
angle 135° C backwards	176								
Immersion tube type	B	=2							
	Bdr	=6							
Ranges									
-40 + 60° C=			35						
0 + 120° C=			12						
0 + 150° C=			15						
0 + 200° C=			20						
Division	celsius (°C)			1					
	Celsius + Fahrenheit (°C+°F)			2					
Columns (Filling)									
Blue fluid is standard for									
ranges up to +200° C									
Optional: mercury									
	Fü=		1						
	Hg +		2						
Immersion Tube length									
l ₁ in mm (incl. thread)	30=		030						
			40=	040					
			63=	063					
			75=	075					
			100=	100					
			160=	160					
			250=	250					
			300=	300					
Thread connection									
	G 3/8 A / SW 22 =			1					
	G 1/2 A / SW 27 =			2					
Immersion tube materials									
Brass (hex.nut Ms58/tube special brass Ms76, brazed or MS63									
or up to immersion length l ₁ = 63, G1/2 A available in Ms 58 solid material									
Steel (hex.nut) 9SMnPb28K/tube steel St. 35, welded									1
Stainless steel 1.4571 (hex.nut and tube)									2
Special brass Ms76 (hex.nut and tube)									3
CuNi30Fe (hex.nut and tube)									4
									5
Straight type									1
Angle type									2

Immersion tubes of all right-angle thermometers are manufactured with a grooved adapter piece on top, which is installed in the casing and kept in its place by a set screw.

Advantage: Immersion tube can be installed independently of thermometer : After installation , casing can be turned by 360° in any direction

ALLINTON ENGINEERING & TRADING PTE LTD

331 Jalan Besar Singapore 208983

T65 6296 0679 W allinton.com.sg E sales@allinton.com.sg

Scientific Instrument



AK00058

Engine Thermometer

SPECIFICATIONS:

Measuring range: 0 to 100 °C

Model: G / I & G

Connection: 3/8" BSP & 1/2" BSP

Stem Length: 35mm, 50mm, 75mm

Thermometers generally used on cooling water system.



AK00059

Tank Thermometer

Model:

Measuring Range

T-35 (Copper) -10 to 110 °C & F

T (Brass Chrome) -10 to 110 °C & F

S (Stainless st) 0 to 150 °C + F

Thermometers generally used in cargo tanks for the measurement of oil or water temperature.



AK00060

Engine Thermometer

SPECIFICATIONS:

Model: YS (Short Body), YL (Long Body), YXL (Extended Body)

Stem: 60mm, 70mm, 110mm

Range: 0 to 600 °C

Connection: 1/2" BSP

Thermometers used for measurement of exhaust temperature, especially in yanmar engines.

Glass Thermometer

Mercury Filled

Solid Stem Stirring Thermometers

Extra strength bulb. Non-roll cap with ring top .
Protective plastic case. Packed in tens.

305mm. Mercury Filled. 76mm Immersion

Stock Code	Range	Division
AK00061	- 10 / 50C	0.5
	- 10 / 110C	0.5
	- 10 / 110C	1.0
	- 10 / 150C	1.0
	- 10 / 250C	1.0
	- 10 / 360C	2.0
	- 10 / 400C	2.0
	0 / 240F	1.0

305mm. Red Spirit Filled. 76mm Immersion

AK00062	- 10 / 50C	0.5
	- 10 / 110C	1.0
	- 10 / 150C	1.0
	0 / 240F	1.0
	- 10 / 110C	1.0
	0 / 240F	(2.0F)

152mm. Mercury Filled. Total Immersion

AK00063	- 10 / 50C	1.0
	- 10 / 110C	1.0
	- 10 / 250C	5.0
	- 10 / 360C	5.0

General Purpose Subdivided Thermometers

White back glass. Mercury filled. Total immersion

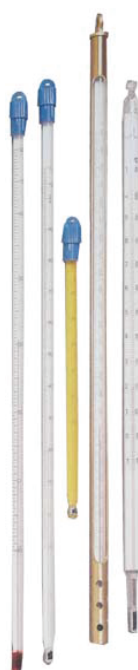
Stock Code	Range	Division	Length mm
AK00064	-5 / 50C	0.2	305
	-5 / 50C	0.2	375
	-5 / 105C	0.2	375
	-5 / 50C	0.1	375
	-5 / 105C	0.1	470

High Range Thermometer

Borosilicate glass. Mercury filled. 76mm immersion

0 / 600C 0.2

Other enclosed scale patterns available to order



AK00065

Cabin Thermometer

SPECIFICATIONS:

Measuring range: -30 to 50 °C

Scale graduation: 1 °C

Dimensions: (W) 42 x (H) 250 x (T) 9mm

Thermometer used for measuring room/ ambient temperature.

Cold Room Thermometer

SPECIFICATIONS:

Measuring range: -50 to 50 °C

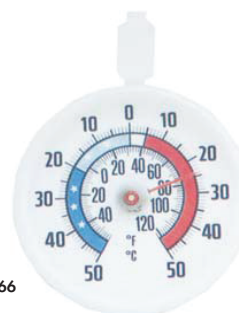
50 to 120 °F

Scale graduation: 1 °C and 2 °F

Dimensions: 70mm dia

Sensors: Coil type

Thermometer used for measuring temperature in cold rooms and/ or refrigerators.



AK00066



AK00067

SKM Surface Thermometer

SPECIFICATIONS:

Case Dimensions: 64mm Ø Dia x 16mm (T)

Cover Material: SUS 304

Sensors Dimensions: Coil type

Temp. range: -40 to 60 °C + F 0 to 120 °C + F

0 to 160 °C + F 0 to 200 °C + F

0 to 300 °C + F 0 to 400 °C + F

7010 TRANS pH PAL

TRANS pH Pal utilizes a gel-filled combination (measuring & reference) electrode, most economical for accurate on-site testing.

Specifications

Operating range	: 0 to 14 pH
Resolution	: 0.1 pH
Operating Temp. Range	: 0° to 50 °C
Accuracy	: ± 0.2 pH
Calibration	: Factory calibrated at pH 7.00
Battery life	: 200 hours
Power source	: 4 x 1.4V (A76) Button cell
Weight	: Approx. 50gms
Dimension	: 147mm (L) x 32mm (W) x 15mm (H)

Order Information

pH PAL: -7010 pH7.00 Buffer Solution

TRANS pH Pro

TRANS pH Pro uses a specially prepared glass measuring electrode in conjunction with the reference electrode and two point calibration to provide a stable reading of ±0.05pH accuracy. The readings are automatically compensated in the operating range of 0°C to 70°C. TRANS pH Pro features states-of-the-art electronics together with a large liquid crystal display for easy reading.

Specifications

Operating range	: 0 to 14.00 pH
Resolution	: 0.01 pH
Accuracy	: ± 0.5 pH
Temperature	: Automatic compensation from 0° to 70 °C
Calibration	: Factory calibrated at pH 7.00 and pH 4.00
Battery life	: 200 hours
Power source	: 4 x 1.4V (A76) Button cell
Weight	: Approx. 75gms
Dimension	: 147mm (L) x 32mm (W) x 15mm (H)

Order Information

pH PRO: -4010 pH4.01 Buffer Solution, 7010 pH7.00 Buffer Solution, 1001 pH10.01 Buffer Solution



AK00068

AK00069



TRANS Conductivity (TDS) pH PAL

Trans TDS Pal is a self-contained, digital pocket-sized conductivity meter with cell and automatic temperature compensator. It readily provides quick and accurate conductivity readings on demand.

Model	TDS 1	TDS 2	TDS 3	TDS 4
Stock Code	AK00069	AK00070	AK00071	AK00072
Range	1,990ppm	10,000ppm	19,900umho	19,900umho
Resolution	10ppm	100ppm	10umho	100umho
Accuracy	2%	2%	2%	2%

Temp Compensation	: Automatic from 0° to 50 °C
Operating Temp	: 0° to 50 °C
Measuring Technique	: Uses square wave AC conductivity measurement for high accuracy
Power source	: 4 x 1.4V (A76) Button cell
Battery life	: 200 hours
Weight	: Approx. 50gms
Dimension	: 147mm (L) x 32mm (W) x 15mm (H)

Order Information

TDS 1 PAL	TDS 2 PAL
2020-1382ppm Std Solution	2010-1413 S Std Solution
TDS 3 PAL	TDS 4 PAL
2100--6440ppm Std Solution	2100-12.88mS Std Solution



AK00073

7540 Hygrothermometer

SPECIFICATIONS:

Sensors:	Human hair for humidity Glass thermometer for temperature
Measuring Range:	20 to 100% for relative humidity -10 to 50 °C for temperature
Scale graduation:	1% for relative humidity, 2 °C for temperature
Accuracy:	± 3% for R.H., ± 1 °C for temperature
Dimensions:	150mm dia x 40mm
Weight:	Approx. 0.28kg



AK00074

7542 Hygrothermometer

SPECIFICATIONS:

R. Humidity:	Measuring range: 20 to 100% Graduation: every 2% Accuracy: ± 4% (20 °C ± 5 °C)
Temperature:	Measuring range: -20 to 60 °C Resolution: Digital display every 0.1 °C Accuracy: ± 1 °C
Dimensions:	135 (D) x 33 (T)mm
Weight:	0.35kg
Accessories:	Bracket 160 (D) x 4 (T) mm, Batteries "C" cell x 1



AK00075

Asahi Wet & Dry Hygrometer

SPECIFICATIONS:

Measuring Range:	-10 to 50 °C
Scale graduation:	1 °C
Dimensions:	100 (W) x 250 (H) x 25 (T) mm



AK00076

Model: TH-200/ TH-300 Thermohygrometer

SPECIFICATIONS:

Sensors:	Coil type
Measuring Range:	-30 to 50 °C for temp. 20 to 100% for humidity
Scale graduation:	2 °C for temp. 5% for humidity
Dimensions:	150mm dia & 250mm dia



Mason's Hanging Pattern Thermohygrometer

320mm x 80mm. Quality polypropylene plastic case with lid and bulb protectors. Detachable plastic water cistern. Mercury filled tubes mounted on metal scale. Supplied with hygrometric table, spare wick and mounting screws.

Stock Code	Range
AK00077	-5/50C -5/50C & 20/120F As above but conforming to BS. 2841 -5/50C



General Purpose Thermohygrometer

74mm x 56mm. All plastic construction. Hangs, stands or clips over.

Stock Code	Range
AK00078	0/100% RH



Whirling Pattern Thermohygrometer

230mm x 50mm. Robust yellow plastic frame with folding handle. Plastic water cistern. Mercury filled (replaceable) tubes. Supplied with hygrometric tables and spare wick. Conforming to BS 2842.

Stock Code	Range
AK00079	-5/50C 20/120F

Leatherette Carrying Case Thermohygrometer

Protects psychrometer and tables. Supplied with adjustable shoulder strap.

Stock Code AK00080

Push Button Pattern Thermohygrometer

Maximum & Minimum Thermometer
Push Button Type.
Plastic Casing Range: -40 to 50 °C + F
Stock Code AK00081



AK00082

7640 Barometer

SPECIFICATIONS:

Type: Fortin (Mercury column)
Type tube: 10mm
Scale: 650 to 820mm Hg
(520/790mm, High Altitude type)
870 to 1090mm or hPa
(700/1050mm, High Altitude type)
Vernier: 0.1mm & 0.1mb or hPa
Accuracy: ± 0.1 mm Hg (or mb/hPa)
Thermometer: Hg glass thermometer - 20 to 50°C
Dimensions: 1130 (H) x 100 (W) x 100 (D) mm
1100 (H) x 110 (W) x 100 (D) mm
(J.M.A Certified type)
Weight: Barometer approx. 2.5kgs
Mounting board, approx. 1.8kgs
Barometer, approx. 3.4kgs
Mounting board, approx. 2.3kgs
(J.M.A certified type)

(*) For safety shipping, mercury is separately packed in a glass container.
(except J.M.A Certified type)



AK00084

Sigma II Barometer

SPECIFICATIONS:

Cat No: 7237-00 (Quartz type)
7238-00 (Spring-wound type)
Model: NSII-BQ (Quartz type)
NSII-BS (Spring-wound type)
Clock: 1-day, 7 days and 32 days by charge-over switch
Battery: 2pcs of UM-2 (1.5V)
Battery life: 1 year 1 day & 7 days by change gear for spring-wound
Sensor: Aneroid
Temperature compensation: Bimetal
Measuring range: 940 to 1045 hPa (705 to 785mmHg)
Accuracy: ± 1.10 hPa
Chart graduation: 1.0hPa
Dimensions: 336 (W) x 148 (D) x 295 (H) mm
Weight: Approx. 3.1kgs (Quartz type)
Approx. 3.4kgs (Spring-wound type)



AK00083

7612 Barometer

SPECIFICATIONS:

Air pressure:
Measuring: 945 to 1045 hPa (black scale)
710 to 780mm Hg (red scale)
Graduation: Every 1hPa/1mm Hg
Accuracy: ± 1 hPa
Temperature:
Measuring range: -20 to 70°C
Resolution: Digital display every 0.1 °C
Accuracy: ± 1 °C
Dimensions: 135 (D) x 33 (T) mm
Weight: 0.25kg
Accessories: Bracket: 160 (D) x 4 (T) mm
Batteries: "C" cell x 1



AK00085

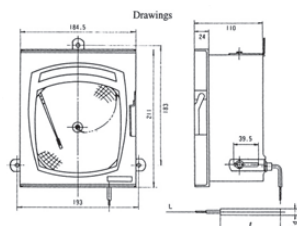
7620 Precision Survey Altimeter

SPECIFICATIONS:

Measuring range: 0 to 4500m (1030/580hPa)
Graduation: Every 10m (2hPa)
Temperature compensation: Bimetal
Accuracy: $\pm 2\%$
Case material: Metal
Dimensions: 70mm \varnothing x 28mm (D)
Weight: Approx. 0.2kg
Accessories: Carrying case



AK00086



SMC 1 Temperature Recorder

Model LMC, SMC 1 or 2 Points Temperature Recorder with or without Electric Contact for Alarm

Model LMC-1 (Type 3730-L) Solid liquid-actuated, 1-point recording
Model SMC-1 (Type 3330-S) Mercury-actuated, 1-point recording
Model SMC-2 (Type 3334-S) Mercury-actuated, 2-point recording

SPECIFICATIONS:

Case & cover: Aluminium Cast Alloy (ADC)
Finish: Melamin-baked plating
Window: Glass
Lead wire: SUS304 Flexible tube
Bulb: SUS304 NS type (without thread)

(Model SMC-2 has two lead wires as well as two bulbs)

Electric contact point: Micro-switching 1-point contact is available for model SMC-1 only. Rated capacity: 250VAC 5A
Spring-wound or AC driven

Chart drive: Spring-wound or AC driven

Standard lead length: 2m

Recording pen: Cartridge pen - Type CPV-77 (violet) for model SMC-1 and LMC-1
Type CPW-11 (violet or red) for model SMC-2

Panel cut size: 170 x 200mm

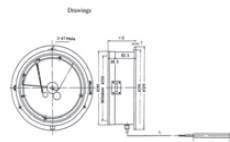
Available Temperature Range and Charts No.

Temp. Range (°C)	M/M DIV.	24H/REV.	168H/REV.
-100 to +50	5	-	No. 16810050
-50 to +50	2	No. 245050	No. 1685050
-10 to +50	1	-	No. 1681050
0 to +100	2	No. 24100	No. 168100
0 to +150	5	No. 24150	No. 168150
0 to +200	5	No. 24200	No. 168200
0 to +250	5	-	No. 168250
0 to +300	5	-	No. 168300

*1 ... For model LMC-1 only. *2 ... For model SMC-1/SMC-2 only.



AK00087



SSY 1 Temperature Recorder

Model SSY 1 or 2 Points Temperature Recorder

Model SSY-A1 (Type 3300-S) Mercury-actuated, 1-point recording

Model SST-A2 (Type 3302-S) Mercury-actuated, 2-point recording

**Model LSY Solid Liquid-actuated type is available.

**Model SSY-H Wet & Dry Bulb temperature recording type is available.

SPECIFICATIONS:

Case & cover: Aluminium Cast Alloy (ADC)
Finish: Melamin-baked plating
Window: Glass
Lead wire: SUS304 Flexible tube
Bulb: SUS304 SW (union) type with screw PT1/2"

(Model SMC-2 has two lead wires as well as two bulbs)

Chart drive: Spring-wound or AC driven (100VAC)

Standard lead length: 3m (Maximum up to 30m)

Recording pen: Cartridge pen

Type CPV-71 (violet) for model SSY-A1
Type CPW-11 (violet or red) for model SSY-A2

Available Temperature Range and Charts No.

Temp. Range (°C)	M/M DIV.	12H/REV.	24H/REV.	168H/REV.
-50 to +50	2	-	No. 245050	No. 16810050
-20 to +50	1	-	No. 242050	No. 1682050
0 to +50	1	-	No. 2450	No. 16850
0 to +100	2	No. 12100	No. 24100	No. 168100
0 to +120	2	No. 12120	No. 24120	No. 168120
0 to +150	5	No. 12150	No. 24150	No. 168150
0 to +200	5	-	No. 24200	No. 168200
0 to +250	5	-	No. 24250	No. 168250
0 to +300	5	-	No. 24300	No. 168300
0 to +400	10	No. 12400	No. 24400	No. 168400
0 to +500	10	-	No. 24500	No. 168500
0 to +600	10	-	No. 24600	No. 168600

Scientific Instrument

Pressure Gauge with Bottom Connection



AK00088

Pressure Gauge with Bottom Connection Liquid Filled



AK00089

Pressure Gauge with Back Connection



AK00090

Pressure Gauge with Back Connection Liquid Filled



AK00091

Cock Valve



AK00092

Hydraulic Pump Calibrator with Hose Fittings

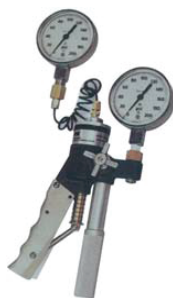


AK00093

Accuracy	± 5% of gauge span
Test Fluid	Petroleum based oils, Hydraulic fluids and Distilled Water
Operation Pressure	3000 psi maximum
Wetted Parts	Aluminium, brass, stainless steel and lexan
"O" Rings	Buna N
Reservoir Capacity	1 pint
Test Connection	1/4" NPT, 24" long hose

Stock Code	Model	Description
AK00093	T-620101	Hand-held Hydraulic Pump
AK00094	T-621102	0 to 1000 psig Gauge with pump
AK00095	T-622	0 to 1000 psig Gauge with pump
AK00096	T-623	0 to 1000 psig Gauge with pump
AK00097	T-633	Carrying case

Pneumatic Hand Pump



AK00098

Accuracy	± 5% of gauge span
Operation Pressure	200 psi maximum
Wetted Parts	Aluminium, brass, stainless steel, nylon and Nylatron GS*
"O" Rings	Buna N
Test Connection	1/4" NPT, 24" long hose

Stock Code	Model	Description
AK00098	T-730	Pump Only (fir range 0 to 30psi)
AK00099	T-740	Pump Only (fir range 0 to 200psi)
AK00100	T-731	0 to 300" H2O Gauge with pump
AK00101	T-732	0 to 30psi Gauge with pump
AK00102	T-742	0 to 100psi Gauge with pump
AK00103	T-743	0 to 200psi Gauge with pump
AK00104	T-663	Carrying case

Vacuum Hand Pump



AK00105

Accuracy	± 5% of gauge span
Range	0 to 25" of mercury vacuum
Operation Pressure	200psi max
"O" Rings	Buna N
Test Connection	1/4" NPT, 24" long hose

Stock Code	Model	Description
AK00105	T-750	Pump Only
AK00106	T-751	Pump Only with 0-30 Hg gauge
AK00107	T-663	Carrying case

Deadweight Tester



AK00108

Features

Accuracy of 0.1% of reading
 Operating pressure of 15psi to 10,000psi
 (100kPa to 70,000kPa)
 Operating Media 1305D-SAE 20 weight automotive or machine oil
 1305DH-Phosphate based or glycol fluids
 Traceable to NIST
 O-Ring material 1305D-Buna-N (D Series) 1305DH-Ethylene propylene (DH series)
 Stainless steel piston and cylinder material
 Non-metallic die-cast zinc weight material
 Reservoir volume approximately 1.5 pints (0.7 litre)

Stock Code	Model	Description	Pressure Range	
			Low	High
AK00108	1305D-10	Deadweight Tester	15-200psi	75-1000psi
AK00109	1305D-20	Deadweight Tester	15-400psi	75-2000psi
AK00110	1305D-30	Deadweight Tester	15-600psi	75-3000psi
AK00111	1305D-50	Deadweight Tester	15-1000psi	75-5000psi
AK00112	1305D-100	Deadweight Tester	15-2000psi	75-10000psi