

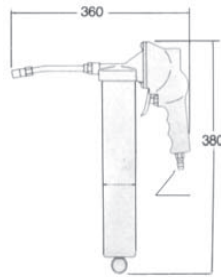
Lubricating & Painting Products

Electric & Air Powered Grease Gun

851702 APG-400 Air Powered Grease Gun
Heavy duty Air operated grease gun accepts 400g bellows grease cartridge. Pulling the lever once enables grease to discharge approximately 1g.

Specifications

Container Capacity	Output	Output Pressure	Voltage	Net Weight (kg)
Original Grease CARTRIDGE 400g	2-9kgf/cm ² (0.2-0.9MPa)	1g / stroke	450kgf / cm ² (45MPa)	2.1



851702
APG-400 Air-Operated Type
AT00033

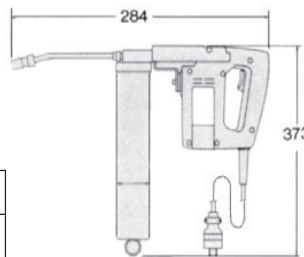


Electric & Air Powered Grease Gun

851293 EG-400A AC-100V Type Grease Gun
This electric driven grease gun is powered by AC 100V which is common power supply worldwide. Maximum portability and easy operation will realize quick work due to high discharging pressure.

Specifications

Container Capacity	Output	Output Pressure	Voltage	Net Weight (kg)
Original Grease CARTRIDGE 400g	1.6g/sec. (60kgf/cm ² LOAD)	500kgf/cm ² (50MPa)	AC-100V 50-60Hz	3.2



851293
EG-400A AC-100V Type
AT00034

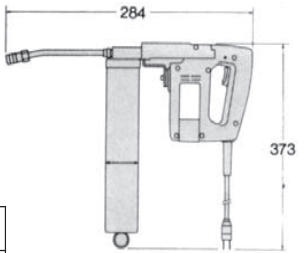


Electric & Air Powered Grease Gun

851706 EG-400D DC-24V Battery Type Grease Gun
This electric driven grease gun is powered by DC 24V battery which is installed in heavy construction vehicles. Maximum portability and easy operation will realize quick work due to high discharging pressure. Note: Anti overload device is not include in this unit. In order to protect battery, anti overload wire code must be used.

Specifications

Container Capacity	Output	Output Pressure	Voltage	Net Weight (kg)
Original Grease CARTRIDGE 400g	1.6g/sec. (60kgf/cm ² LOAD)	320kgf/cm ² (32MPa)	DC-24V /430W	3.2



851706
EG-400D DC-24V Type
AT00035

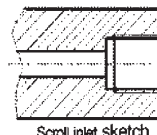
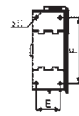
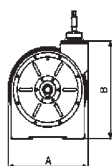


Water Hose Reels (IRON Drum Single Armed)

- Widely used for transferring air, water and grease
- Single arm base with fortified arm on the side for stronger
- Long life design of driving spring
- Two bearings structure make working life longer



AT350A1
AT350B1
AT350C1



Stock Code	Length (mm)	I.D. (mm)	O.D. (mm)	Material	W.P. (bar)	Scroll inlet Internal thread	Hose outlet Internal thread (C type)	Packaging size (LxWxH)mm	N.W. (kg)
AT350A1	10	6	15	S.A.E. 100R1AT	320	ZG1/4"	G1/4"	355x240x450	13
AT350B1	12	6	15	S.A.E. 100R1AT	320	ZG1/4"	G1/4"	355x240x450	14
AT350C1	15	6	15	S.A.E. 100R1AT	320	ZG1/4"	G1/4"	355x240x450	15

Multi Purpose Grease

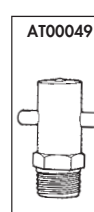
AT00036



Grease Nipple



Straight		90°		45% S.S.	
Stock Code	Size	Code No.	Size	Code No.	Size
AT00037	1/8"	AT00041	1/8"	AT00045	1/8"
AT00038	1/4"	AT00042	1/4"	AT00046	1/4"
45%		S.S. Straight		90% S.S.	
Stock Code	Size	Code No.	Size	Code No.	Size
AT00039	1/8"	AT00043	1/8"	AT00047	1/8"
AT00040	1/4"	AT00044	1/4"	AT00048	1/4"



Pin Type	
Stock Code	Size
AT00049	1/8"
AT00050	1/4"

Button Type	
Stock Code	Size
AT00051	1/8"
AT00052	1/4"



ALLINTON ENGINEERING & TRADING PTE LTD
331 Jalan Besar Singapore 208983
T65 6296 0679 W allinton.com.sg E sales@allinton.com.sg