

# Material Handling

## Kanazawa Vertical Lifting Clamp

KVC Series

Features:

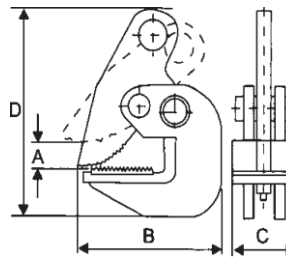
- Pivoting shackle ensures adequate gripping pressure to hold plate safety
- Hardened steel jaws for positive grip and locking mechanism
- Suitable for structural steel up to HRC30/Brinell300
- 150% overload factory tested
- Manufactured according to EC Council Directive 98/37/EC Machinery, American Standard ANSI/ASME B30.20

Stock Code	Rated Capacity (t)	AQ01091	AQ01092	AQ01093	AQ01094	AQ01095
Rated Capacity	t	0.5	1.0	2.0	3.0	5.0
Proof Test Load	KN	7.35	14.7	29.4	44.1	73.5
Jaw Opening	mm	0-15	0-20	0-25	0-30	0-50
Net Weight	kg	1.9	4.8	6.5	14.8	22.5



## Kanazawa Horizontal Lifting Clamp

Stock Code	Model	Rated Capacity (t)	Test Load (t)	Jaw Opening (mm)	N.W (Kg)
AQ01930	0.75T	0.75	1.5	0-25	2.4
AQ01097	1T	1	2	0-30	3.4
AQ01931	2T	2	4	0-35	5.4
AQ01098	3T	3	6	0-40	6
AQ01096	4T	4	8	0-45	6.3
AQ01099	5T	5	10	0-55	7.5



## Kanazawa KBC/KBE I Beam Clamp

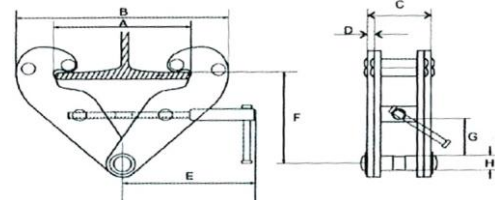
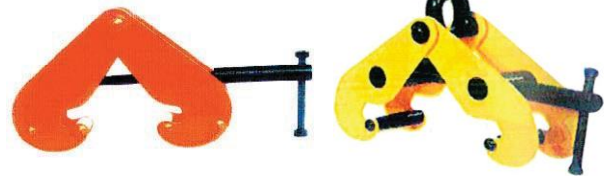
Features:

1. Robust all steel construction with safety operation.
2. Compact size with light weight.
3. Easy to install with minimum headroom.
4. Super-quick in adjustment to any girder width in range.

Stock Code Model		AQ01101 KBC 1	AQ01102 KBC 2	AQ01103 KBC 3	AQ01104 KBC 5	AQ01105 KBC 10
Size	Ton	1	2	3	5	10
Rated Load	kg	1000	2000	3000	5000	10000
Test Load	kN	14.71	29.42	44.13	61.92	125
Flange Width	mm	75-230	75-230	80-320	90-310	90-320
Dimensions (mm)	Max. A	260	260	354	354	400
	Min. A	180	180	235	235	250
	Max. B	360	360	490	490	520
	C	64	74	103	110	120
	D	5	6	8	10	12
	E	215	215	260	260	280
	Max. F	155	155	225	225	230
	Min. F	102	102	140	140	160
	Min. G	25	25	45	45	70
	H	22	22	24	28	44
Net Weight	kg	4.5	5	10.5	11	16
Gross Weight	kg	5.5	8	11.5	12	17
Packing Size	kg	43x10x17	43x10x17	39x14x34	39x14x34	55x17x28

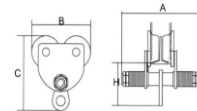
KBC Series

KBE Series



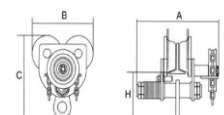
## Kanazawa Plain Trolley KPT – A

Stock Code	Test load (t)	Test load (kn)	Chain pull to lift full load (n)	Min. radius of curve (m)	Dimensions (mm)						Adjustable beam width (mm)
					A	B	C	E	F	H	
AQ01079	0.5	6.25	30	0.9	198	176	183	28.5	1.5-3	107	68-105
AQ01080	1	12.5	40	1	220	204	231	45	1.5-3	133	74-135
AQ01081	2	25	50	1.1	235	226	228	52	1.5-3	124	80-135
AQ01082	3	37.5	50	1.3	285	274	303	70	1.5-3	166	88-166
AQ01083	5	62.5	80	1.4	315	302	240	72	1.5-3	190	124-194



## Kanazawa Gear Trolley KGT – A

Stock Code	Test load (t)	Test load (kn)	Chain pull to lift full load (n)	Min. radius of curve (m)	Dimensions (mm)						Adjustable beam width (mm)
					A	B	C	E	F	H	
AQ01085	0.5	6.25	30	0.9	198	161	188	36	1.5-3	112	68-105
AQ01086	1	12.5	40	1	257	204	231	45	1.5-3	133	74-135
AQ01087	2	25	50	1.1	270	226	228	52	1.5-3	125	80-135
AQ01088	3	37.5	50	1.3	333	274	303	70	1.5-3	166	88-166
AQ01089	5	62.5	80	1.4	375	302	340	71.5	1.5-3	190	124-194



ALLINTON ENGINEERING & TRADING PTE LTD

331 Jalan Besar Singapore 208983

T65 6296 0679 W allinton.com.sg E sales@allinton.com.sg