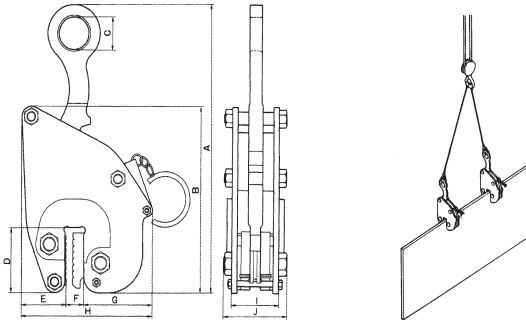


FL-VA Flawless Vertical Lifting Clamp



Dimensions



Specifications

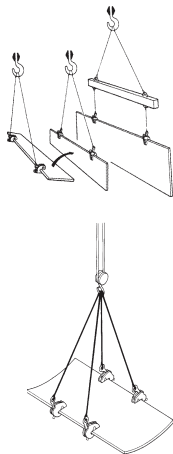
Stock Code	Basic Use Load	Grip Width (min) (max)	Clamp Weight (kg)												
				A	B	C	D	E	F	G	H	I	J		
AQ00557	1/2 TON	3-13	5.0	340	195	40	75	50	15	90	157	48	70		
AQ00558	1 TON	3-15	6.5	385	215	50	85	60	17	102	181	60	90		
AQ00559	2 TON	6-25	13.5	495	290	60	105	70	26	123	221	68	120		
AQ00560	3 TON	8-32	20.5	515	339	56	119	88	34	134	256	78	108		

Clamp naming style: (example) Model FL-VA 2-Ton

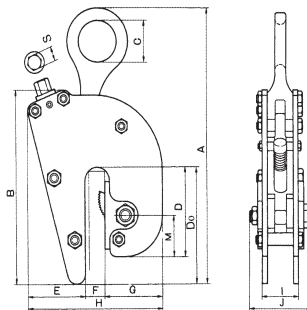
Features

- 1) Clamp strength increases proportionally to increases in the load, powerfully gripping the load.
- 2) The clamp can be clamped on the load with the locking lever in the open position and then subsequently locked.
- 3) If sliding or overload occurs, an internal toothed safety cam clamps onto the load to prevent sliding.
- 4) Clamps are extra tough due to special alloy steel and advanced manufacturing and heat treatment.

FL-V Flawless Vertical Clamp



Dimensions



Features

- 1) Netsuren Model FL-V clamp lifts heavy loads without scratching, a task previously believed impossible. It is an epoch-making clamp developed with safety foremost in mind.
- 2) The many uses for this clamp include lifting standard steel plates, high-tension steel plates for bridges, boiler manufacture or manufactured plates, high-pressure tanks, and others. It is also appropriate for stainless steel plates, aluminium plates, and other non-ferrous plates where magnets cannot be used for lifting operations.
- 3) Clamping takes place between the light alloy slider, which adjusts to the thickness of the load, and the grip plate with its special mechanism, to ensure that "sliding" does not occur.
- 4) The clamp contains a failsafe mechanism to prevent dropping from sliding caused by overload or shocks from hitting obstacles.

Specifications

Stock Code	Basic Use Load	Grip Width (min) (max)	Clamp Weight (kg)													
				A	B	C	D	Do	E	F	G	H	I	J	M	
AQ00561	1/2 TON	0-16	3.0	19	245	149	40	72	82	59	19	60	138	44	74	40
AQ00562	1 TON	0-25	7.5	19	400	233	60	113	148	71	29	79	179	52	80	55
AQ00563	2 TON	0-25	10.5	19	430	282	60	130	170	92	32	93	217	58	98	60
AQ00564	3 TON	0-30	18.0	19	520	303	75	135	183	107	36	97	240	70	118	62
AQ04630	3 TON	20-50	19.0								56		250			
AQ00565	5 TON	0-30	32.0	22	610	380	90	165	225	115	40	130	295	99	154	90
AQ04631	5 TON	20-50	32.9								60		310			

Clamp naming style: (example) Model FL-V 3-Ton (0-30)