

Fast Cut®

Heavy Duty & High Performance

Fast Cut® resin bonded abrasive wheels are manufactured with high quality fibre-glass reinforcements bearing high tensile strength and shock absorbing characteristics.

Through a continues research & development, we have developed a unique X-Bond resin bonding formula & technology which provide superior grinding efficiency, durability and operator safety.

Consistent High Quality & Safety

Through the wide use of automated manufacturing equipment & computer controlled & processes, and a very stringent quality control process, we are able to produce consistent high quality abrasive wheels.

Fast Cut® wheels are manufactured to comply with German DSA, JIS, OSHA & ANSI B7.1 safety standards.

To meet the exacting safety requirements of the Industrial Safety Code for heavy industries, Fast Cut also product the "Triple Reinforced" depressed center grinder wheels, and the "Double Reinforced" cut-off wheels.

Quality Assurance & Safety

Fast Cut® abrasive wheels are subjected a final Pre-Shipment Inspection for every export shipment and are issued with a Quality Inspection Report to ensure compliance of performance & safety standard.



AE00243

Grinding Disc (Steel)

Stock Code	Size
AE00242	100 x 4 x 16
AE00243	100 x 6 x 16
AE00244	115 x 4 x 22
AE00245	115 x 6 x 22
AE00246	125 x 6 x 22
AE00247	150 x 6 x 22
AE00248	180 x 4 x 22
AE00249	180 x 6 x 22
AE00250	230 x 6 x 22



AE00257

Flexible Disc WA

Grinding Disc (Stainless Steel)

Stock Code	Size
AE00251	100 x 6 x 16
AE00252	115 x 6 x 22
AE00253	125 x 6 x 22
AE00254	150 x 6 x 22
AE00255	180 x 6 x 22
AE00256	230 x 6 x 22



AE00260

Cutting Disc (Steel)

Cutting Disc (Stainless Steel)

Stock Code	Size
AE00260	100 x 2 x 16
AE00261	115 x 3 x 22
AE00262	150 x 3 x 22
AE00263	180 x 3 x 22
AE00264	230 x 3 x 22
AE00265	255 x 3 x 25.4
AE00266	305 x 3 x 25.4
AE00267	355 x 3 x 25.4
AE00268	405 x 3 x 25.4

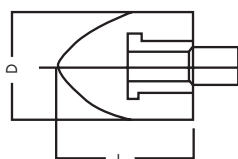
Stock Code	Size
AE00269	100 x 2 x 16
AE00270	115 x 3 x 22
AE00271	150 x 3 x 22
AE00272	180 x 3 x 22
AE00273	230 x 3 x 22
AE00274	250 x 3 x 25.4
AE00275	305 x 3 x 25.4
AE00276	355 x 3 x 25.4
AE00277	405 x 3 x 25.4

Resibon

Cone Wheels (Japan)



AE00278



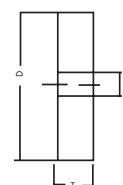
Stock Code	Size/mm	Shank Dia	Material	Speed
AE00278	40x58x9.53	3/8x16T	A24P	3000m/min
AE00279	40x58x9.53	3/8x24T	A24P	3000m/min
AE00756	50x65x15.88	5/8x11T	A24P	3000m/min

Nikken Resibon™

Straight Grinding Wheels (Japan)



AE00280



Stock Code	D		T		H		Material	Speed
	in	mm	in	mm	in	mm		
AE00280	2"	50	1/2"	13	3/8"	9.53	A - 36Q	18,000
AE00281	2 1/2"	65	1/2"	13	3/8"	9.53	A - 30R	14,000
AE00282	3"	75	1/2"	13	3/8"	9.53	A - 24P	12,000
AE00283	4"	100	3/4"	19	1/2"	12.70	A - 24P	9,000
AE00284	5"	125	3/4"	19	1/2"	12.70	A - 24P	7,200
AE00285	6"	150	3/4"	19	1/2"	12.70	A - 24P	6,000

NIKKON RESIBON

ALLINTON ENGINEERING & TRADING PTE LTD

331 Jalan Besar Singapore 208983

T65 6296 0679 W allinton.com.sg E sales@allinton.com.sg